

FIRMWARE ANNOUNCEMENT

December 2024

SUBJECT

Experience the improved **Ossia NVR - V1.4.12**

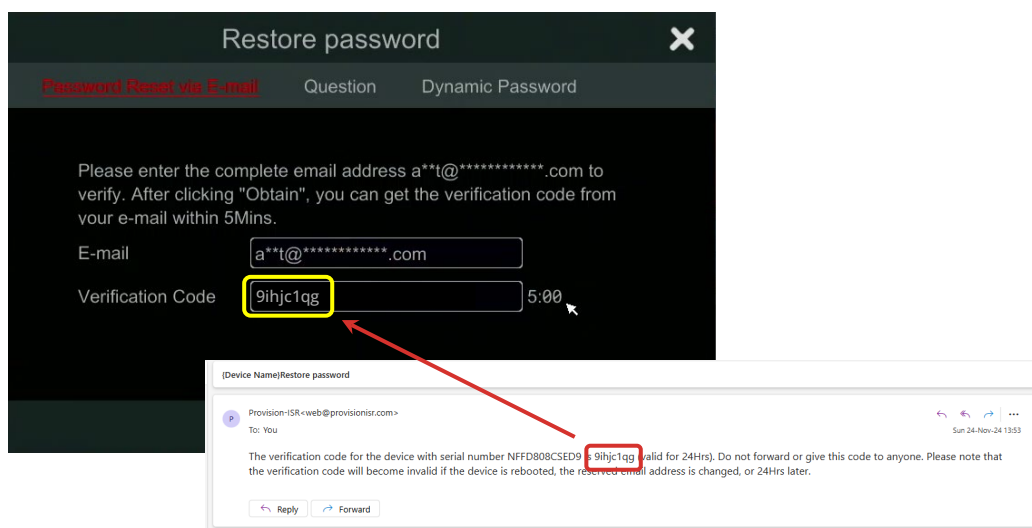
Ossia NVR v1.4.12 (supported models at the end)

LIST OF IMPROVEMENTS:

1) NEW: PASSWORD RECOVERY EMAIL

Resetting your NVR password is now quicker and a whole lot simpler. Forget security questions or dynamic resets. Just **enter your registered email address**, and a verification code will be sent directly to your inbox, allowing you to **reset your password in seconds**.

For new devices, this feature is included in the initial setup wizard. For existing devices, **simply add your email address** under the system settings and enable the option.



[Watch the Video](#)

2) NEW: OBJECT COUNTING BY AREA

Counting objects has never been easier!

Area-based object counting is now **fully configurable directly on the NVR**. Define detection zones, set thresholds, and trigger custom alerts when occupancy limits are reached.

Whether tracking humans, 2-wheels, or 4-wheels, this feature offers **advanced customization options**, including staying thresholds, automatic or manual counter resets, and **on-screen display adjustments**.

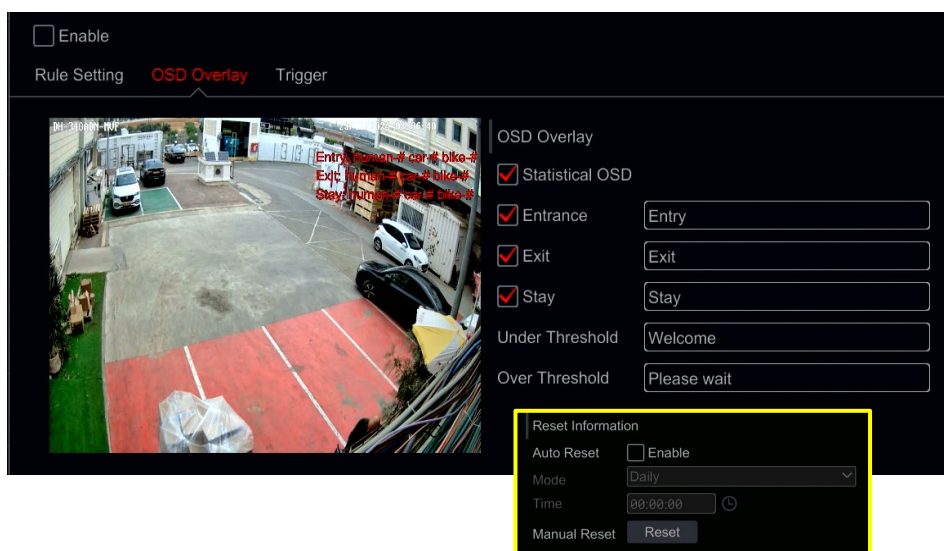


[Watch the Video](#)

3) IMPROVED: OBJECT COUNTING BY LINE

With version 1.4.12, Object Counting by Line includes additional settings directly on the NVR. Now, you can **set "staying" thresholds for tracked objects** and trigger alerts when thresholds are exceeded. Whether it's a push notification, video pop-up, email, or activating onboard audio-visual alarms, the response is **yours to define**.

You can also **customize the On-Screen Display (OSD)** and **reset counters** manually or automatically. There is no need to access the camera's web interface.

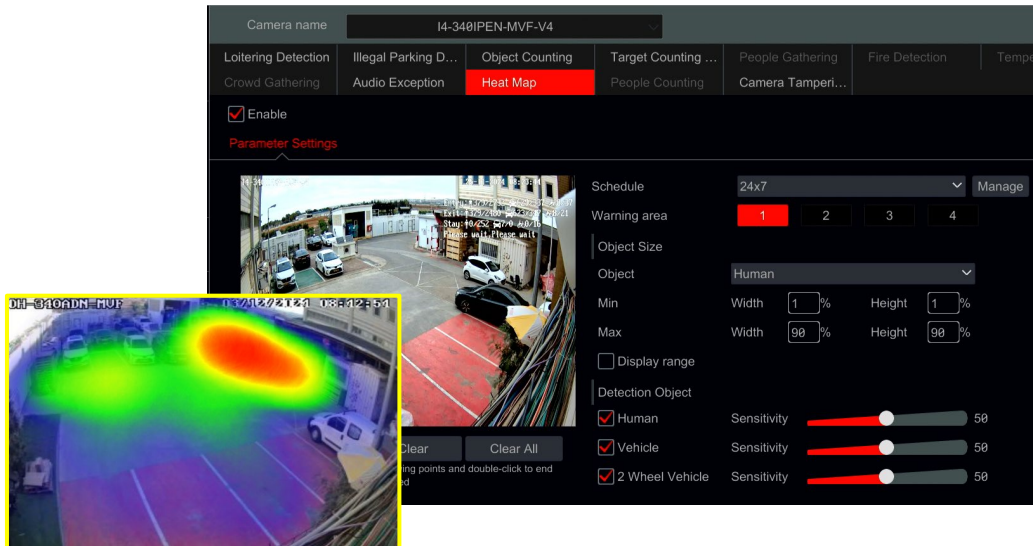


[Watch the Video](#)

4) NEW: HEATMAP SUPPORT

Heatmap analytics, previously accessible only through the IP camera's web interface, **can now be configured directly on the NVR** with firmware version 1.4.12. This feature visually represents **activity density** and **movement** within a defined area using Provision-ISR's AI.

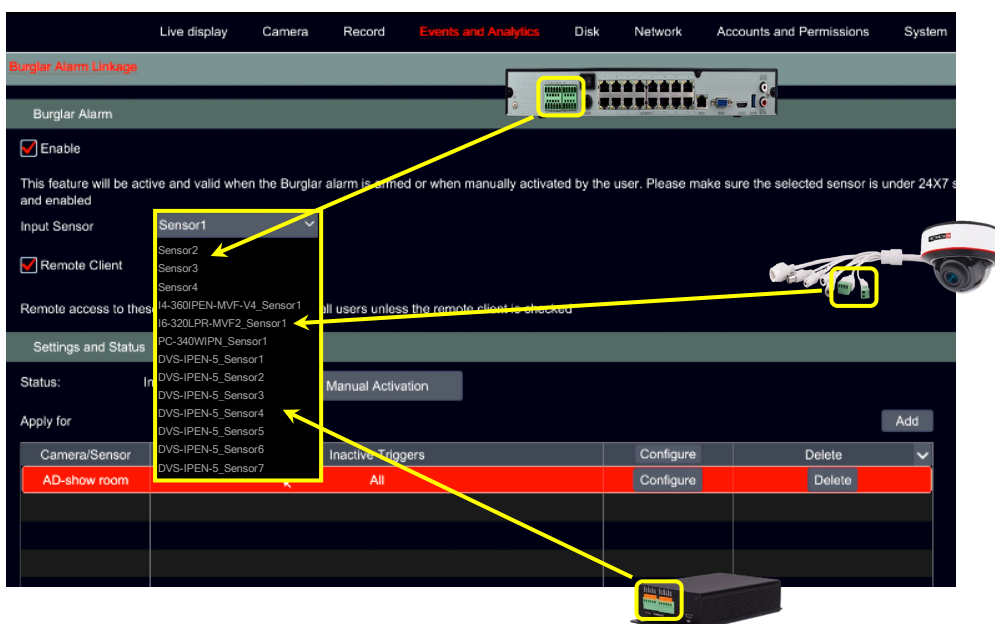
With **color-coded overlays** displayed on the camera's field of view, heatmaps provide actionable insights for analyzing trends and patterns in object movement.



5) IMPROVED: BURGLAR ALARM

The Burglar Alarm feature allows you to **activate or deactivate specific triggers and notifications based on the system's armed state**. Version 1.4.12 offers enhanced options for arming and disarming, which previously relied solely on the NVR's built-in I/O ports.

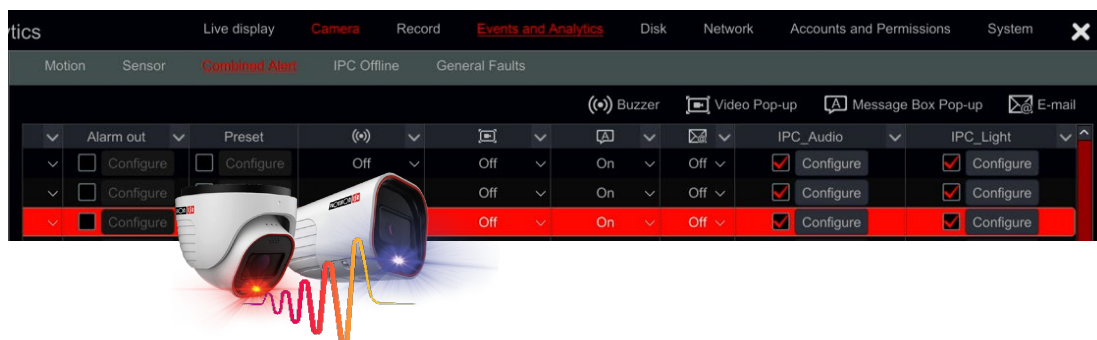
Now, you can use alarm inputs from **connected IP cameras or I/O expansion boxes**, providing **greater flexibility for installations** where the NVR lacks physical I/O ports or is far from external devices.



6) IMPROVED: COMBINED ALERT

The combined alert feature initiates unified system responses, including App notifications, email alerts, video pop-ups, alarm outputs, and PTZ camera actions. With this update, **visual and audio alerts from active deterrence cameras are now included as additional triggers.**

this enhancement expands the versatility of combined alerts, allowing **more** dynamic and effective **system responses** to multi-event triggers for improved security management.



7) NEW: PoE IP SPEAKER INTEGRATION

This firmware release supports the functionality of the new PoE IP Speakers, offering versatile audio management.

- By **connecting to an NVR**, the speakers are a **centralized device for system-wide voice announcements** and alerts.
- When **linked with an IP camera** via the NVR, they can **generate audio responses based on analytics**, adding an important auditory layer to your security system.

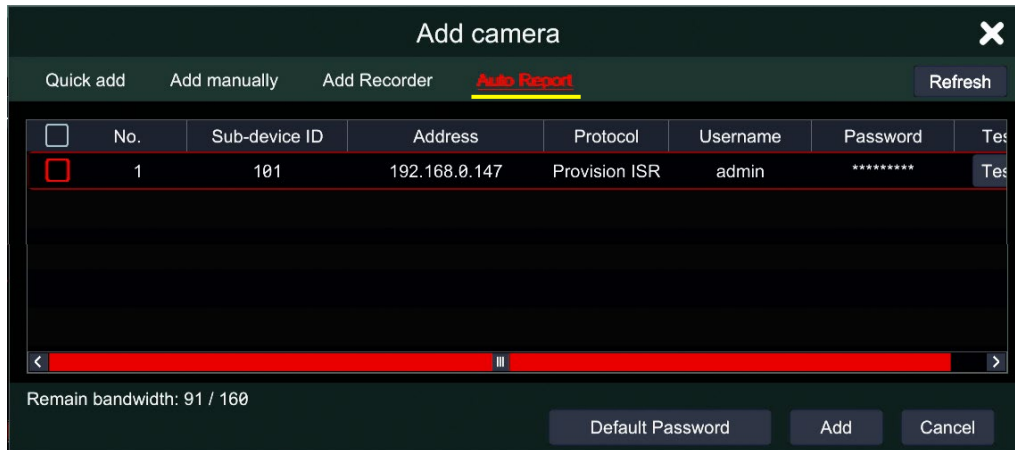
This new feature transforms your PoE IP speakers into **powerful tools** for **communication and deterrence**, making your system smarter and more responsive to real-time events.



8) NEW: CAMERA AUTO-REPORT

With FW v1.4.12, the new Auto-Report feature **simplifies connecting remote IP cameras** to your NVR. By reversing traditional methods, cameras automatically report to the NVR, **eliminating the need for complex configurations** like static IPs or port forwarding.

This innovation **saves significant time and effort**, allowing for quick and efficient deployment across multiple locations, whether for a single device or an extensive camera network.

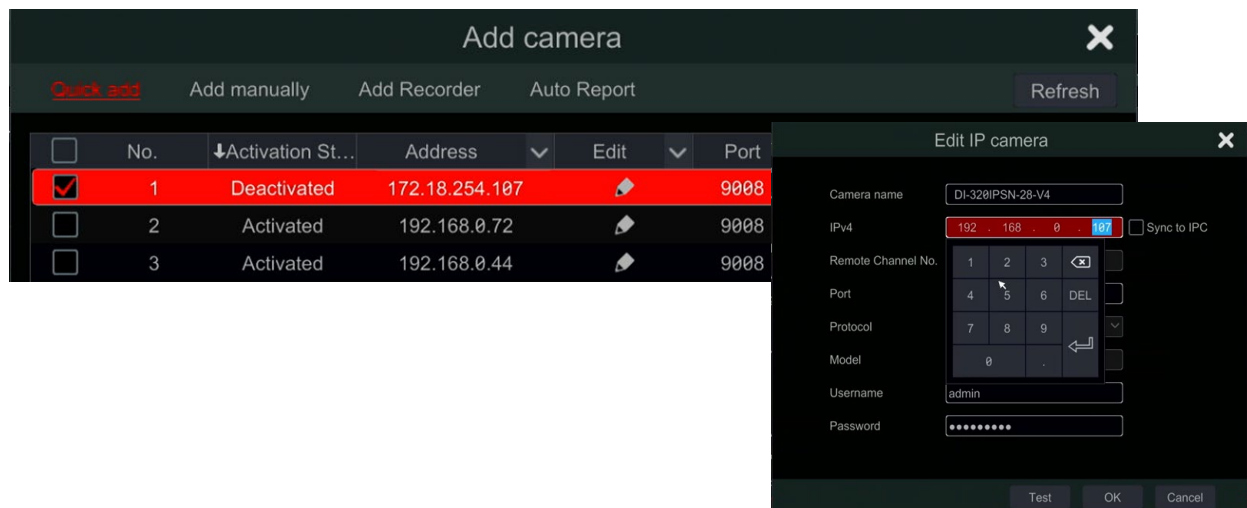


Watch the Video

9) IMPROVED: IPC ACTIVATION

Tired of network restrictions when activating Provision-ISR IP cameras? No Problem! Now, your NVR **lets you activate any camera outside the local network range**. Skip the need for the IP Tool Manager or a laptop; activate directly from the NVR and **adjust the IP address post-activation**.

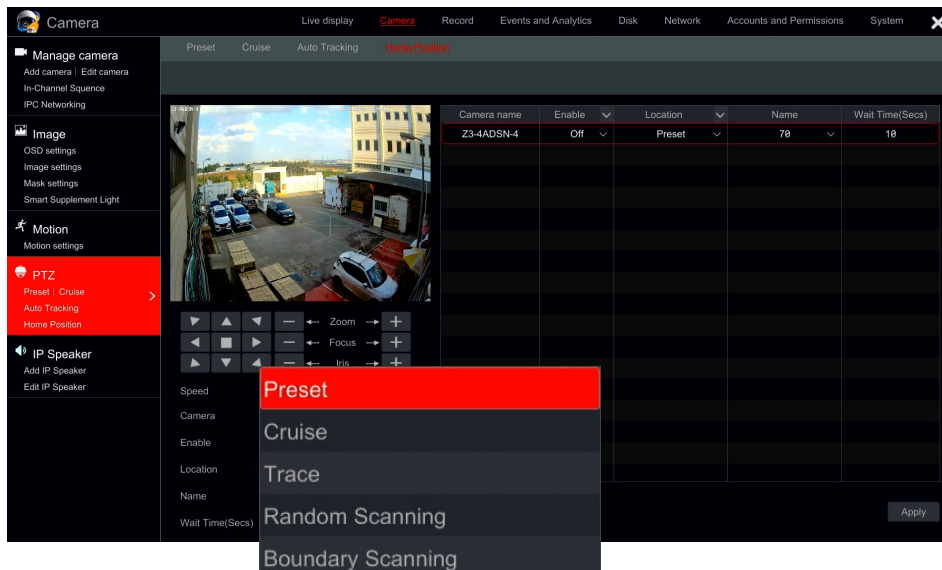
This enhancement simplifies device setup, saving you time and effort while ensuring seamless configuration across diverse setups.



10) IMPROVED: PTZ PARK ACTION

The improved feature lets you **configure PTZ Park Action directly from the NVR**. Easily set your PTZ camera to return to a preset position or resume tasks like cruising, boundary scanning, or random scanning after inactivity.

Simplified setup. **Streamlined control.**



11) NEW: FISHEYE DEWARP & AI SUPPORT

First off, the 12MP 32-channel NVR models now **regain local fisheye dewarping support** for clear, distortion-free views. Dewarp live or recorded footage easily by selecting your installation mode (ceiling, wall, or desk) for optimal perspectives.

Additionally, our new fisheye models (6MP-V3 and 12MP) **come equipped** with advanced **AI (DDA™1) analytics**. You can set triggers for line crossing, sterile area monitoring, or object counting, all backed by precise human recognition. Even with the unique fisheye perspective, our **AI adapts intelligently**, delivering accurate results for optimal surveillance.



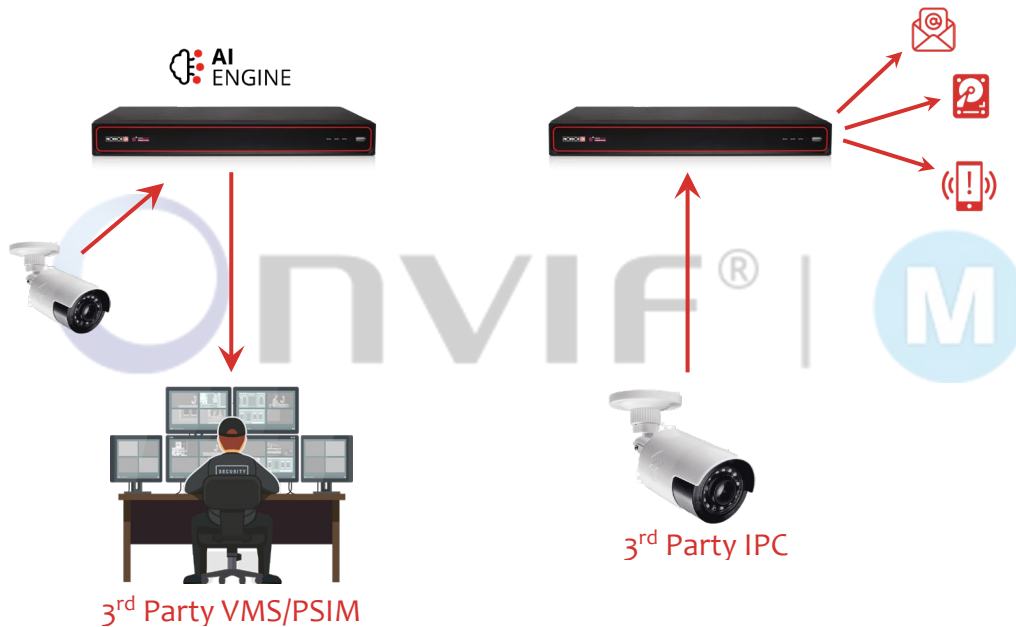
[Watch the Video](#)

12) NEW: ONVIF PROFILE M

Provision-ISR now brings ONVIF Profile M support to our NVRs.

This update enables our NVRs to **send metadata generated by** the NVR's **built-in AI engine** directly to third-party VMS or PSIM platforms for seamless integration.

Additionally, the NVRs can **receive metadata from third-party ONVIF-compatible cameras**, utilizing it for **trigger-based actions** such as event recording, push notifications, and email alerts.

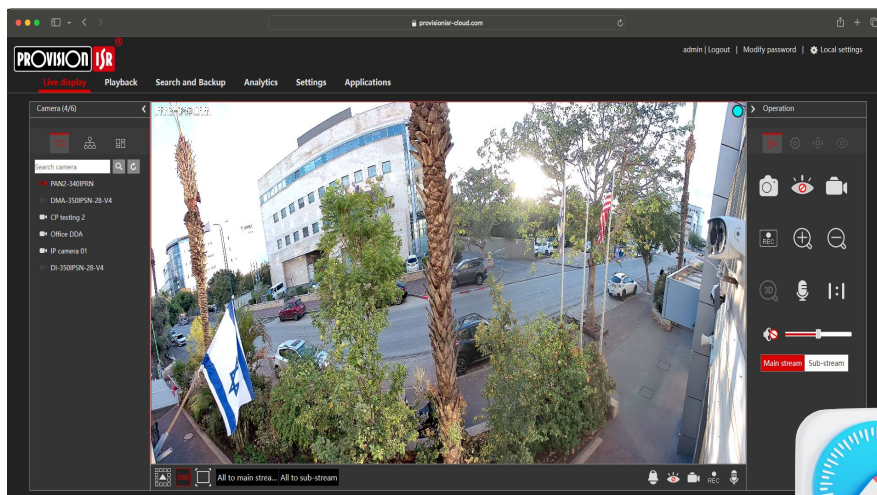


[Watch the Video](#)

13) IMPROVED: SAFARI P2P SUPPORT

Safari users on macOS can now enjoy **improved P2P connectivity**. With the latest update, our NVRs offer **smooth access through Safari**, thanks to an enhanced plugin for Provision-ISR Cloud.

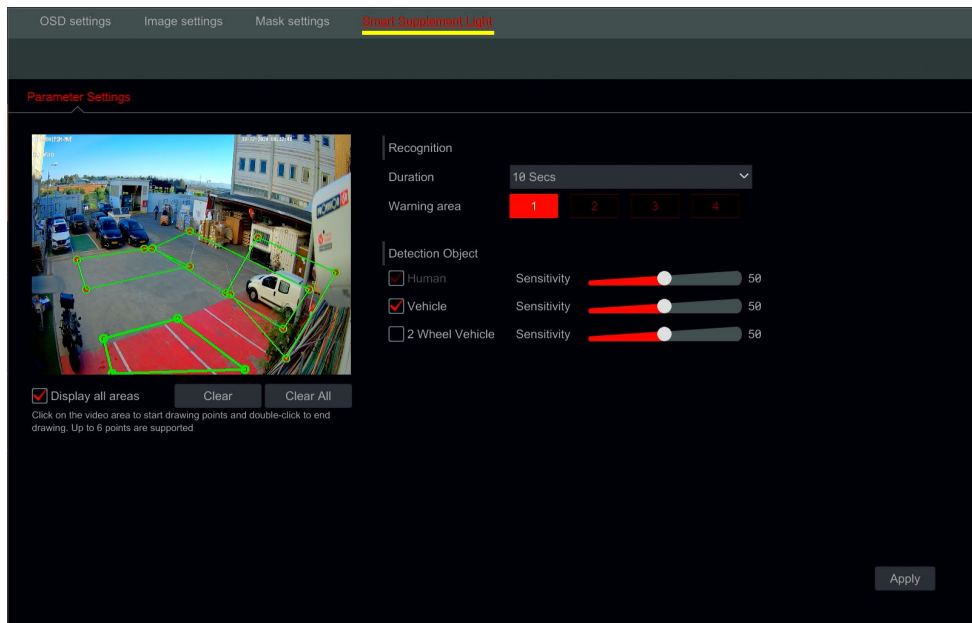
Experience a direct connection to your NVR without any hassle.



14) NEW: SMART SUPPLEMENT LIGHT

Provision-ISR NVRs now support direct configuration of **hybrid cameras' Smart Supplement Light** feature. This advanced feature enhances nighttime surveillance by using IR LEDs for discreet black-and-white imaging and activating white LEDs only when **specific objects** (e.g., humans or vehicles) **enter predefined areas**.

Users can now configure up to **4 detection areas** and select object types to trigger the white LEDs, ensuring precise, tailored illumination while minimizing disturbances.



[Watch the Video](#)

SUPPORTED MODELS

NDAA MODELS	
NVR5-4100PXN(MM)	NVR8-16400PAN(1U)-V2
NVR5-4100XN(MM)	NVR12-8200FAN
NVR5-8200PXN(MM)	NVR12-8200PFAN
NVR5-8200XN(MM)	NVR12-16400FAN(1U)
NVR8-4100PN-V2	NVR12-16400PFAN(1U)
NVR8-8200N	NVR12-32800FAN(1U)
NVR8-8200N-V2	NVR12-32800FN-16P(2U)
NVR8-8200PN-V2	NVR12-32800RFAN(2U)
NVR8-16400AN(1U)	NVR16-641600RFAN(2U)
NVR8-16400AN(1U)-V2	NVR16-128RFAN(3U)

NON-NDAA MODELS	
NVR5-4100PX+(MM)	NVR8-16400PF(1.5U)
NVR5-4100X+(MM)	NVR8-16400PFA(1U)
NVR5-8200PX+(MM)	NVR8-32800F(1U)
NVR5-8200X+(MM)	NVR8-32800F(2U)
NVR8-8200FA	NVR8-32800F-16P(2U)
NVR8-8200PFA	NVR8-32800FA(1U)
NVR8-16400A(1U)	NVR8-32800RFA(2U)
NVR8-16400F(1U)	NVR8-641600R(2U)
NVR8-16400FA(1U)	NVR8-128RT(3U)