

256 Channel Video Recorder

GU-RN-CT816256N

GRUNDIG



Type: Standalone NVR - IP - Recorder
Item Code: GU-RN-CT816256N
EAN CODE: 4260573067015

SMART

The SMART product line offers comprehensive coverage of modern video systems with advanced AI analysis and solutions for various application areas.

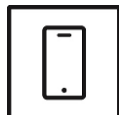
Highlights

Redundant power supply



A redundant power supply unit in a server consists of at least two modules that maintain operation if one fails. Each power supply unit can take on the full load, which prevents failures and increases system availability.

Smartphone App



The mobile application was developed to facilitate operators in effectively controlling and managing video systems remotely, at any time. It allows for live image viewing, playback of recorded video data, and receipt of remote notifications.

Deep Learning



Deep Learning is inspired by the complex structure of the human brain. This innovative method allows processing of information and performing corresponding actions based on analysis.

H.265+



H.265pro+ utilizes the standard H.265/High Efficiency Video Coding (HEVC) format, but boasts advanced technologies that enable it to substantially reduce the necessary transmission bandwidth and storage capacity for maximum efficiency.

Object Classification



This technology employs a highly advanced deep learning algorithm that can discern whether the alarm was triggered by a human, a vehicle or some other object.

Features

- Many intelligent functions: deep learning distinguishing between human and vehicles, detection of line crossing, intrusion, queue length, crowd density, lost objects and display of heat map. Recognition of car license plates and faces including allowed and blocked lists. Counting of different Objects.
- RAID configuration
- Hot Spare Mode - working as Failover Server for another NVR
- Redundant AC Power Supply included

Gedistribueerd door:

VSS Nederland B.V.

vssnederland.nl

NDA compliant

GRUNDIG Security's SMART line is fully compliant with the National Defense Authorization Act (NDAA), which prohibits U.S. federal agencies and their partners from using video surveillance and telecommunications equipment or services from certain Chinese companies. This law is part of the John S. McCain NDAA and is effective August 2020.

With our SMART product line, you can be confident that your security system complies with this important regulation. Our products meet the highest standards of quality and reliability, providing you with the security you need to protect your assets and personnel.

Specifications GU-RN-CT816256N

Video

IP Inputs: 256 channels

Recording / Playback

Recording Bandwidth: 1024 Mbps

Outgoing Bandwidth: 800 Mbps

Recording Resolution: 12 MP, 8 MP, 5 MP, 3 MP, 1080P, 960P, 720P

Recording Mode: Continuous, Event Alarm, Motion, Video Loss, Schedule

Search Mode: Date, Time, Event Alarm, Motion, Search Backup

Smart Search Function: Search for people, motorized vehicles, non-motorized vehicles, intrusion and line crossing, thumbnails, tags, faces and characteristics, attendance, visit frequency and license plates

Playback: Synchronised playback of max. 16 cameras

Frame Rate(R): 4K: 240fps, 4MP: 480fps, 2MP: 960fps

Audio

Audio Compression: G.711

Audio Detection: Detects unusual noises: dogs barking, babies crying, gunshots, sudden sound increase and decrease

General

External Backup: USB HDD, USB Memory, Network

Max. Storage Capacity: Up to 16 TB capacity for each HDD, hot swappable

Languages: Czech, Dutch, English, Finnish, French, German, Italian, Portuguese, Spanish, Russian, Turkish, Polish

PTZ Control: Pan, Tilt, Zoom, Preset set and call

Accessories included: Mouse, Sata cable, 19 inch rack mount kit

Network

Number of Clients: Up to 20 simultaneously

Video Compression: H.264, H.264+, H.265, H.265+, MJPEG

Streaming Method: Unicast, Multicast

Cyber Security: Different password levels, password protection, complicated password, HTTPS encryption, digest authentication for HTTP/HTTPS, IP address filter, WSSE and digest authentication for ONVIF, RTP/RTSP over HTTPS, control timeout settings, security audit log, TLS 1.0, TLS 1.1 & TLS 1.2, TLS 1.2 with updated cipher suites including AES 256 encryption, Brute Force Delay Protection, Signed Firmware.

Remote Connections: 512

I/O Interface

RAID: RAID 0, RAID 1, RAID4, RAID 5, RAID6, RAID 10

HDMI Output: HDMI1, 2 & 3: 3840 x 2160 (EDID/4K), 2560 x 1440, 1920 x 1080, 1440 x 900, 1280 x 1024, 1280 x 720, 1024 x 768
HDMI4: 1920 x 1080, 1440 x 900, 1280 x 1024, 1280 x 720, 1024 x 768

I/O Interface

Audio Input/Output:	1-ch audio input and 1-ch audio output
Alarm Input/Output:	16/4
Harddisk bay:	16 x SATA III, 1 x e-SATA
Network Interface:	2x 100, 1000 Base T, TX (RJ-45)
Serial Interface(s):	Front panel: 1x USB 2.0, Rear panel: 2x USB 3.0, 1x RS-485, 1x RS-232

Intelligent Functions

Crowd Density Detection:	Counts people in a predefined area. The area, the maximum number of people in it can be set
Face Detection:	Human face appears in the image can be detected and trigger event action
Face Recognition:	Detects and recognizes faces by comparing them to stored portrait images. Actions can be triggered via the allowed, blocked and other list
Heat Map:	Visualizes the number of people in the surveillance area over a period of time with a simple and user-friendly color scheme
Intrusion Detection:	People, motorized vehicles or non-motorized vehicles, enter, exit or drive over a predefined virtual area, up to 4 rules are supported
License Plate Recognition:	Detects and recognizes car number plates. Data- import- export function, actions can be triggered via the allowed, blocked and other list
Object Counting:	People, motorized vehicles, non-motorized vehicles or other movements are counted when crossing a virtual line and the result is displayed on the screen in real time
Line Crossing:	People, motorized vehicles or non-motorized vehicles cross a pre-defined virtual line, up to 4 rules are supported
Object Removal:	Detects within a predefined, adjustable area objects that were originally placed in a specific location and have been removed, as well as objects that have been left behind there
People & Vehicle Detection:	Adjustable whether people, motorized or non-motorized vehicles should be detected.
Queue Length Detection:	Counts people in a predefined area and measures service time. The area, the maximum number of people in it and the maximum service time can be set
Motion Detection:	Adjustable whether people, motorized or non-motorized vehicles or only movements should be detected. The detection area and sensitivity can also be adjusted.
Tamper Protection:	Detection of scene change, defocus, sudden audio increase/decrease or audio loss.
Limits of intelligent functions:	Some functions are only available if supported by the connected camera. Some features are limited by the number of supported channels.
Event Source:	Motion, AI Functions, Video Loss, Network Interruption, Video Tampering, HDD Full, HDD Error, Audio Detection and Alarm Inputs
Event Action:	Send e-mail, trigger alarm output, push notification for GSVM App and C-WERK, upload to FTP/Cloud, trigger HDD recording and/or image capture, show message on screen, PTZ linkage, voice prompt, buzzer

Approvals

Regulation:	CE, EAC, FCC, RoHS Compliant
Standard:	ONVIF (Profile S, Profile G, Profile T), SDK/API
MTBF at 25° C:	>60.000 hours

Environmental

Operating Temperature:	-10 °C ~ +50 °C (+14°F ~ + 122°F)
Humidity:	Less than 90%, non condensing

Electrical

Supply Voltage:	2 x 230/240 VAC, 50Hz / 60Hz redundant power supply
Power Consumption:	≤ 8 W without harddisk

Mechanical

Dimensions:	440 × 460 × 149 mm (17.3 × 18.11 × 5.87 inch)
-------------	---

256 Channel Video Recorder GU-RN-CT816256N

GRUNDIG

Mechanical

Weight: 12200 g (2.9 lb)

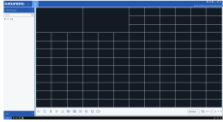
Packaging

Package Dimensions: 605 x 585 x 260 mm (23.8 x 23 x 10.2 inch)

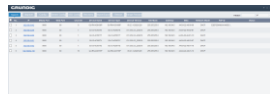
Package Weight: 14700 g (32.4 lbs)

Packaging Unit: 1

Accessories



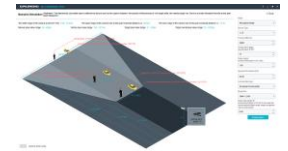
GU-SW-VMS



GU-SW-IP-FINDER



GU-SW-PLAYER

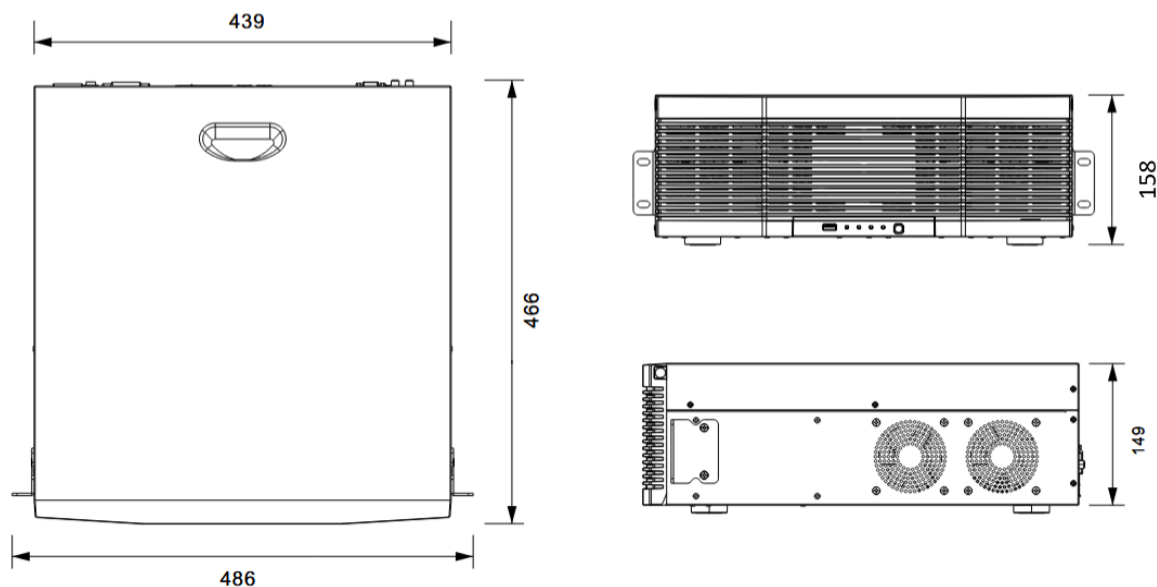


GU-SW-INST-TOOL



GU-KB-AP4450M

Dimensions



Smart Line

In addition to the usual reliability, the SMART product line from GRUNDIG Security offers numerous image analysis functions, supported by artificial intelligence (AI). For example, use the LPR function to recognize license plates or facial recognition to identify people. Or reduce the number of false alarms by classifying objects as 'Vehicle', 'Person' or 'Other'. GRUNDIG Security's SMART cameras are able to detect people in crowds, count the number of heads and measure the length of queues, e.g. B. to be determined in the checkout area. In this way, they help you to use your resources optimally. They also inform you if unauthorized people cross predefined lines or enter certain areas.

Environmentally friendly packaging

Our environmentally friendly packaging with less colour print is made from 100% recyclable material. To save resources, our detailed operating instructions are available online for download. The quick reference guides that come with the devices are printed on 100% recycled paper.

Gedistribueerd door:

VSS Nederland B.V.

18.05.2026 | Gegevens kunnen zonder voorafgaande kennisgeving worden gewijzigd

vssnederland.nl

Pagina 5 van 5