

MPB-72M2713M0B

243648



HD Analogue Camera Bullet, Day&Night, 1920x1080, Infrared, D-WDR, 2.7-13.5mm, 12Vdc, IP67

Main Features

1/2.8" 2 Megapixel SONY STARVIS 2 CMOS sensor

Resolution max. 1920x1080 pixels (Full HD)

Super low light performance by Sony STARVIS 2 technology

Multisignal: HD-TVI, AHD, CVI and Composite selectable

Digital signal: EX-SDI, HD-SDI selectable

Motorized lens 2.7 ~ 13.5mm

Removable infrared cut filter

ROI (Region of Interest) WDR mode

Integrated motion detector, defog, privacy zones

IP67

Easy installation, central locking screw

IR illumination switchable via OSD menu

Specifications

General	
Heating	No
Sunshade canopy	Yes
Integrated wall mount	Yes
Lighting	Infrared
Dimensions (WxHxD) (extended)	100x108x267mm
Illumination range	ca. 60m
Weight	1.35 kg
Text overlay	available
Color (Housing)	Pantone Cool Gray 1C
Housing type	Outside

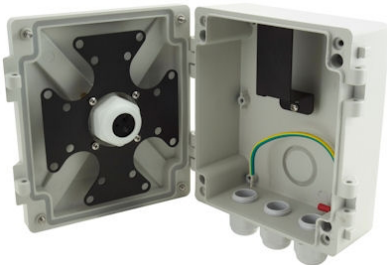
MPB-72M2713M0B

Housing material	Aluminium
Power consumption	8.5 W
Mounting type	Ceiling, Wall
Protection	IP67
Power supply	12VDC
Temperature Range (Operating)	-30°C ~ +50°C, @ Luftfeuchtigkeit 20%-80% (nicht kondensierend)
Wide Dynamic Range (WDR)	D-WDR
Camera	
Backlight compensation	Yes
Low Speed Shutter	Yes
Recording sensor	CMOS
Chip size	1/2,8"
Flickerless function	Yes
Camera shape	Bullet
Signal-to-noise ratio	50 dB
Day/night mode	Automatic, Day, Night, extern (Sensor)
White balance	Automatic, Preset, Manual, AUTOext
Photosensitivity	0.005Lux (Day mode), 0.0005Lux (Night mode)
System	True Day&Night
Day/night switching	Switchable IR Filter (ICR)
Display	
Image resolution max.	1920x1080
DORI	
Watch (62px/m)	18 - 52 m
Detect (125px/m)	8 - 25 m
Identify (250px/m)	4 - 12 m
Perceiving (25px/m)	47 - 128 m
Functions	
Motion detector	Yes
Digital Noise Reduction (DNR)	Yes
Menu languages	Chinese, English, French, German, Japanese, Korean
Notes	
Remark	NDAA compliance under Section 889
Interfaces / Inputs/ Outputs	
Alarm inputs	0
Number of alarm outputs	0
External connections	voltage input, 1x SDI Signal (BNC), 1x HD/SD Analog Signal (BNC), connection cable approx. 100cm
Interface Protocols	UTC (HD Signal Format)
Control Interfaces	Coaxitron (HD Protocol)
Video Outputs	Composite (FBAS)

MPB-72M2713M0B

Parts supplied	
Scope of delivery	Quick installation guide,drilling template,Easy Bracket,4x wall plugs with screws,video sub-output cable,4x M4x15mm screws,1x Allen wrench
Lens	
Horizontal angle of view	101 - 32°
Vertical angle of view	54 - 18°
Focal length	2.7 - 13.5 mm
Aperture Range (F)	F1.6
Lens Type	Varifocal (motorized)
Zoom Factor (Digital)	0
Zoomfactor (optical)	4
Video	
Resolution (extended)	1920x1080,1280x720,720x576,720x480
Signal Format	AHD @ 2MP, Composite (FBAS), EX-SDI @ 2MP, HD-SDI @ 2MP, HD-TVI @ 2MP
Product labeling:	
Manufacturer order number	243648
Series	eneo KX-Serie,eneo COAXIZE,eneo Candid Medium

Optional Accessory



eneo AK-4



eneo PM-42A

Sizes (mm):

