

Type: PTZ Dome - IP - Camera

Item Code: GU-CI-AP8744P

EAN CODE: 4260573065349

SMART

The SMART product line offers comprehensive coverage of modern video systems with advanced AI analysis and solutions for various application areas.

Highlights

Ultra Low Light



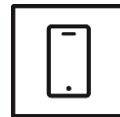
Designed for unparalleled performance in low-light environments, this camera incorporates advanced image processing and a high-capacity image sensor, ensuring exceptional image quality even in ultra-low light conditions.

Object Classification



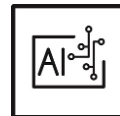
This technology employs a highly advanced deep learning algorithm that can discern whether the alarm was triggered by a human, a vehicle or some other object.

Smartphone App



The mobile application was developed to facilitate operators in effectively controlling and managing video systems remotely, at any time. It allows for live image viewing, playback of recorded video data, and receipt of remote notifications.

Deep Learning



Deep Learning is inspired by the complex structure of the human brain. This innovative method allows processing of information and performing corresponding actions based on analysis.

Active Deterrence

The Active Deterrence system helps deter potential intruders at an early stage. Thanks to built-in light sources and/or speakers, possible criminal activities can be prevented before they occur. Depending on the scenery, cameras with either a white or a red-blue light source are available. With its integrated deep-learning algorithm, the system can reliably identify individuals. If an intrusion alarm is triggered, it not only sends an alert but also delivers the corresponding video footage directly to a mobile device in real-time.

Features

- 8 Megapixel IP Camera with real time video streaming
- Many AI functions integrated such as face detection, intrusion detection, object counting, queues, heat map and much more
- 0 Lux: Integrated LED IR Illuminator viewable distance up to 200m (Detection)
- Reduction of unwanted alarms (false alarms) by classifying target objects using deep learning algorithms. This significantly reduces false alarms generated by objects other than people or vehicles. This makes finding events easier and saves hard drive capacity
- Built-in microphone
- Built-in Speaker

NDA compliant

GRUNDIG Security's SMART line is fully compliant with the National Defense Authorization Act (NDAA), which prohibits U.S. federal agencies and their partners from using video surveillance and telecommunications equipment or services from certain Chinese companies. This law is part of the John S. McCain NDAA and is effective August 2020.

With our SMART product line, you can be confident that your security system complies with this important regulation. Our products meet the highest standards of quality and reliability, providing you with the security you need to protect your assets and personnel.

Specifications GU-CI-AP8744P

Camera

Image Sensor:	1/1.8" progressive Scan CMOS
Video Resolution:	3840 × 2160
Sensitivity Colour:	0.0005 Lux @ F1.6 (AGC ON)
Sensitivity B/W:	0 Lux LED IR on
Shutter Speed:	1/5 ~ 1/20000 s
Slow Shutter:	Support
White Balance:	Auto, Manual

Lens

Lens Focal Length:	5.5 ~ 202 mm motorized, autofocus
Iris F-Number:	F1.6
Optical Zoom Ratio:	37x
Digital Zoom:	16x
Field of View:	60° ~ 2.3° (horizontal), 35.5° ~ 1.3° (vertical), 67.5° ~ 2.7° (diagonal)

Illuminator

Max. IR Distance:	Up to 200m
White Light Distance:	Up to 25 m

Video

Col/B&W:	Auto (Electronic) , Colour , B&W
Wide Dynamic Range:	120 dB
Image Enhancement:	BLC, 3D DNR, HLC, DIS
Image Settings:	Rotate mode, Saturation, Brightness, Contrast, Sharpness and white balance adjustable by client software or web browser
Day/Night Switch:	Support auto, scheduled, day, night
Privacy zones:	4 zones, rectangle

Audio

Audio Compression:	G.711
Audio Detection:	Detects unusual noises: dogs barking, babies crying, gunshots, sudden sound increase and decrease

General

Accessories included:	Wall mount bracket, Power supply
-----------------------	----------------------------------

Frame Rate

Main Stream:	50 Hz: 25 fps (3840 × 2160, 3072 × 1728, 2592 × 1944, 2592 × 1520, 2304 × 1296, 1920 × 1080, 1280 × 960, 1280 × 720) 60 Hz: 30 fps (3840 × 2160, 3072 × 1728, 2592 × 1944, 2592 × 1520, 2304 × 1296, 1920 × 1080, 1280 × 960, 1280 × 720)
--------------	--

Frame Rate

Sub- Stream:	50 Hz: 25 fps (1920 x 1080, 1280 x 720, 640 x 480, 320 x 240) 60 Hz: 30 fps (1920 x 1080, 1280 x 720, 640 x 480, 320 x 240)
3rd Stream:	50 Hz: 25 fps (640 x 480, 320 x 240) 60 Hz: 30 fps (640 x 480, 320 x 240)

Network

Functions:	Anti-flicker, heartbeat, mirror, password protection, privacy mask, watermark, front glass heater
Video Compression:	H.264, H.264+, H.265, H.265+ , MJPEG
H.264 code profile:	Baseline Profile / Main Profile / High Profile
Bit Rate:	8 Kbps to 16 Mbps
SD Memory:	Built-in Micro SD up to 512 GB, NAS (Support NFS, SMB/CIFS)
Network Protocol:	TCP/IP, HTTP, HTTPS, FTP, DHCP, DNS, DDNS, RTP, RTSP, NTP, UPnP, SMTP, SNMP, 802.1X, IPv4/IPv6, PPPoE
Cyber Security:	Password protection, complicated password, HTTPS encryption, digest authentication for HTTP/HTTPS , IP address filter, WSSE and digest authentication for ONVIF, RTP/RTSP over HTTPS, control timeout settings, security audit log, TLS 1.0, TLS 1.1 & TLS 1.2, TLS 1.2 with updated cipher suites including AES 256 encryption, Brute Force Delay Protection, Signed Firmware.

Pan Tilt Zoom

Number of Patrols:	4 patrols, up to 32 presets for each patrol
Number of Pattern:	4 pattern scans
Number of Preset:	255
Pan Speed:	Configurable, from 0.6°/sec to 200°/sec, Preset Speed: 200°/sec
Tilt Speed:	Configurable from 0.6°/sec to 90°/sec, Preset Speed: 100°/sec
Range Panning:	360° endless
Range Tilting:	-20° ~ 90°
Tracking Functions:	Manual Tracking, Auto Tracking

I/O Interface

CVBS Output:	1-ch, BNC (1.0 Vp-p, 75 Ω) , resolution: PAL: 704 × 576, NTSC: 704 × 480
Audio Input/Output:	1 Input: line in or mic in & built-in microphone, 1 Output: line out & built in speaker, mono sound
Alarm Input/Output:	1, 1
Network Interface:	1x 10, 100 Base T (Ethernet), TX (RJ-45)
Serial Interface(s):	1x RS-485

Intelligent Functions

Motion Detection:	Adjustable whether people or motorized vehicles or only movements should be detected. The detection area and sensitivity can also be adjusted.
People & Vehicle Detection:	Adjustable whether people, motorized or non-motorized vehicles should be detected.
Intrusion Detection:	People, motorized vehicles or non-motorized vehicles, enter, exit or drive over a predefined virtual area, up to 4 rules are supported
Line Crossing:	Cross a pre-defined virtual line with target classification Pedestrian, Motor vehicle and non-motorized Vehicle. 4 different rules can be configured.
Object Removal:	Detects objects left over or lost in the pre-defined region such. In this case an alarm notification or signal will be sent automatically and in real time.
Object Counting:	People, motorized vehicles, non-motorized vehicles or other movements are counted when crossing a virtual line and the result is displayed on the screen in real time
Face Detection:	Human face appears in the image can be detected and trigger event action

Intelligent Functions

License Plate Recognition:	Detects and recognizes car number plates. (Data- import- export function, actions can be triggered via the allowed, blocked and other list, only supported with insert SD-Card).
Heat Map:	Visualizes the number of people in the surveillance area over a period of time with a simple and user-friendly color scheme
Queue Length Detection:	Counts people in a predefined area and measures service time. The area, the maximum number of people in it and the maximum service time can be set
Crowd Density Detection:	Counts people in a predefined area. The area, the maximum number of people in it can be set
Limits of intelligent functions:	Only one of the AI functions can be selected at a time
Event Source:	Video tampering, motion, various AI functions, sudden audio increase-decrease
Event Action:	Send E-mail, trigger alarm output, notify surveillance C-WERK, upload to FTP/NAS, trigger SD-card recording and/or image capture.

Approvals

Protection Rating:	IP67 (IEC 60529-2013), IK10 (IEC 62262:2002), NEMA 4X (NEMA 250-2018)
Regulation:	CE, FCC, RoHS Compliant
Standard:	ONVIF (Profile S, Profile G, Profile T, Profile M), SDK/API

Environmental

Operating Temperature:	-30 °C ~ 60 °C (-22 °F ~ 140 °F)
Humidity:	Less than 90%, non condensing

Electrical

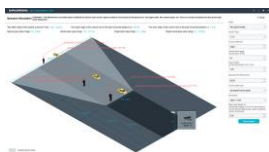
Supply Voltage:	36 VDC, 24 VAC, PoE (IEEE 802.3bt)
Power Consumption:	Max. 45 W

Mechanical

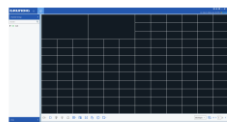
Material:	Aluminium alloy
Dimensions:	Ø 206 x 338 mm (Ø 8.13 x 13.3 inch)
Weight:	5200 g (11.5 lb)

Packaging

Package Dimensions:	310 x 305 x 590 mm (13.2 x 12 x 23.2 inch)
Package Weight:	9000 g (19.8 lbs)
Packaging Unit:	1

Accessories

GU-SW-INST-TOOL



GU-SW-VMS



GU-SW-IP-FINDER



GU-SW-PLAYER

Accessories



GD-BR-AMC04



GD-BR-AMP04



GD-KB-AP1420P



GD-BR-AMA01



GD-BR-AMW09



GD-BR-AWJ03

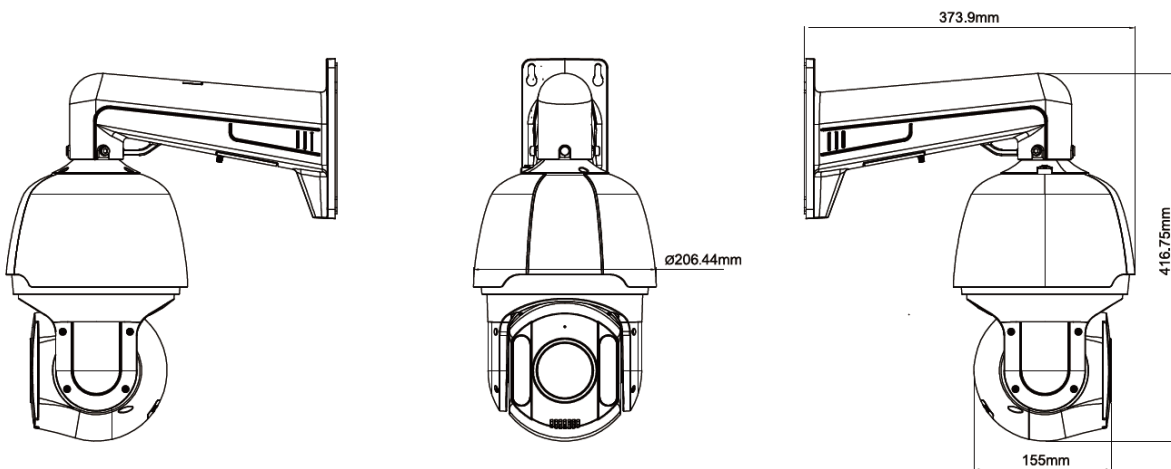


GD-BR-AMP06



GD-BR-AMS01

Dimensions



Guarantee

All cameras in the “SMART”, “PRO” and “PREMIUM” product lines have an extended warranty period of 5 years on electronic parts, mechanical wear and tear on moving parts is not included. Please note our general delivery terms and conditions.

Environmentally friendly packaging

Our environmentally friendly packaging with less colour print is made from 100% recyclable material. To save resources, our detailed operating instructions are available online for download. The quick reference guides that come with the devices are printed on 100% recycled paper.