

Type: Bullet - IP - Camera

Item Code: GU-CI-AP8634T

EAN CODE: 4260573065318

SMART

The SMART product line offers comprehensive coverage of modern video systems with advanced AI analysis and solutions for various application areas.

Highlights

Ultra Low Light



Designed for unparalleled performance in low-light environments, this camera incorporates advanced image processing and a high-capacity image sensor, ensuring exceptional image quality even in ultra-low light conditions.

Object Classification



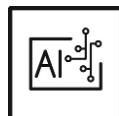
This technology employs a highly advanced deep learning algorithm that can discern whether the alarm was triggered by a human, a vehicle or some other object.

H.265+



H.265pro+ utilizes the standard H.265/High Efficiency Video Coding (HEVC) format, but boasts advanced technologies that enable it to substantially reduce the necessary transmission bandwidth and storage capacity for maximum efficiency.

Deep Learning



Deep Learning is inspired by the complex structure of the human brain. This innovative method allows processing of information and performing corresponding actions based on analysis.

Active Deterrence

The Active Deterrence system helps deter potential intruders at an early stage. Thanks to built-in light sources and/or speakers, possible criminal activities can be prevented before they occur. Depending on the scenery, cameras with either a white or a red-blue light source are available. With its integrated deep-learning algorithm, the system can reliably identify individuals. If an intrusion alarm is triggered, it not only sends an alert but also delivers the corresponding video footage directly to a mobile device in real-time.

Features

- Reduction of unwanted alarms (false alarms) by classifying target objects using deep learning algorithms. This significantly reduces false alarms generated by objects other than people or vehicles. This makes finding events easier and saves hard drive capacity
- Many AI functions integrated such as face detection, intrusion detection, object counting, queues, heat map and much more
- Built-in Microphone & Speaker
- White light flash and audible alarm deterrent function

NDAA compliant

GRUNDIG Security's SMART line is fully compliant with the National Defense Authorization Act (NDAA), which prohibits U.S. federal agencies and their partners from using video surveillance and telecommunications equipment or services from certain Chinese companies. This law is part of the John S. McCain NDAA and is effective August 2020.

With our SMART product line, you can be confident that your security system complies with this important regulation. Our products meet the highest standards of quality and reliability, providing you with the security you need to protect your assets and personnel.

Specifications GU-CI-AP8634T**Camera**

Image Sensor:	1/1.8" progressive Scan CMOS
Video Resolution:	3840 × 2160
Sensitivity Colour:	0.0008 Lux @ F1.7 (AGC ON)
Sensitivity B/W:	0 Lux LED IR on
Shutter Speed:	1/5 ~ 1/20000 s
Slow Shutter:	Support
White Balance:	Auto, Manual

Lens

Lens Focal Length:	2.8 ~ 12 mm motorized, autofocus
Iris F-Number:	F1.47 ~ F2.53 +/-5%
Lens Drive Type:	P-Iris
Focus Adjustment:	Auto- Focus, Manual - Focus
Optical Zoom Ratio:	4x
Field of View:	111° ~ 40° (horizontal), 57° ~ 22° (vertical), 137° ~ 46° (diagonal)

Illuminator

Max. IR Distance:	Up to 50 m
White Light Distance:	Up to 30 m
White LED:	yes

Video

Col/B&W:	Auto , Color , B&W, IR-cut filter removable (ICR)
Wide Dynamic Range:	120 dB
Image Enhancement:	BLC, 3D DNR, HLC, DIS, DEFOG
Image Settings:	Corridor mode, Saturation, Brightness, Contrast, Sharpness and white balance adjustable by client software or web browser
Day/Night Switch:	Support auto, scheduled, day, night
Privacy zones:	4 zones, rectangle

Audio

Audio Detection:	Detects unusual noises: dogs barking, babies crying, gunshots, sudden sound increase and decrease
------------------	---

General

Accessories included:	Junction box
-----------------------	--------------

Frame Rate

Main Stream:	50 Hz: 25 fps (3840 × 2160, 3072 × 1728, 2592 × 1944, 2592 × 1520, 2304 × 1296, 1920 × 1080, 1280 × 720) 60 Hz: 30 fps (3840 × 2160, 3072 × 1728, 2592 × 1944, 2592 × 1520, 2304 × 1296, 1920 × 1080, 1280 × 720)
--------------	--

Frame Rate

Sub- Stream:	50 Hz: 25 fps (1920 x 1080, 1280 x 720, 640 x 480)
	60 Hz: 30 fps (1920 x 1080, 1280 x 720, 640 x 480)
3rd Stream:	50 Hz: 25 fps (640 x 480, 320 x 240)
	60 Hz: 30 fps (640 x 480, 320 x 240)

Network

Functions:	One-key reset, anti-flicker, three streams, mirror, password protection, privacy mask, IP-address filter
Video Compression:	H.264, H.264+, H.265, H.265+ , MJPEG
Bit Rate:	256 Kbps to 16 Mbps
SD Memory:	Built-in Micro SD up to 512 GB, NAS (Support NFS, SMB/CIFS)
Client software:	C-WERK Viewer, Smart-Line Client PC-Software, IOS App, Android App (GSVM)
Web Browser:	Plug-in required live view: IE10/IE11
	Non Plug-in live view: Chrome 57+, Mozilla Firefox 52+, EDGE 89+
	Local Service: Chrome 57+, Firefox 52+, EDGE 89+
Network Protocol:	TCP/IP, IPv4/IPv6, HTTP, HTTPS, FTP, DHCP, DNS, DDNS, RTP, RTSP, NTP, UPnP, SMTP, PPPoE, SNMP
Cyber Security:	Different password levels, password protection, complicated password, HTTPS encryption, digest authentication for HTTP/HTTPS , IP address filter, WSSE and digest authentication for ONVIF, RTP/RTSP over HTTPS, control timeout settings, security audit log, TLS 1.0, TLS 1.1 & TLS 1.2, TLS 1.2 with updated cipher suites including AES 256 encryption, Brute Force Delay Protection, Signed Firmware.

I/O Interface

Audio Input/Output:	1 Input: line in or mic in & built-in microphone, 1 Output: line out & built in speaker, mono sound
Alarm Input/Output:	2, 2
Network Interface:	1x 10, 100 Base T, TX PoE (RJ-45)
Serial Interface(s):	1x RS485, 1x WIEGAND

Intelligent Functions

Motion Detection:	On, Off, Area Setting, Sensitivity
People & Vehicle Detection:	Adjustable whether people, motorized or non-motorized vehicles should be detected.
Intrusion Detection:	People, motorized vehicles or non-motorized vehicles, enter, exit or drive over a predefined virtual area, up to 4 rules are supported
Line Crossing:	People, motorized vehicles or non-motorized vehicles cross a pre-defined virtual line, up to 4 rules are supported
Object Removal:	Detects objects left over or lost in the pre-defined region such. In this case an alarm notification or signal will be sent automatically and in real time.
Object Counting:	Entrance and Exit object number is accounted and showed on screen in real time
Face Detection:	Face recognition in real time and instantly match them against a watchlist
License Plate Recognition:	Detects and recognizes car number plates. (Data- import- export function, actions can be triggered via the allowed, blocked and other list, only supported with insert SD-Card).
Heat Map:	Visualizes the number of people in the surveillance area over a period of time with a simple and user-friendly color scheme
Queue Length Detection:	Counts people in a predefined area and measures service time. The area, the maximum number of people in it and the maximum service time can be set
Crowd Density Detection:	Counts people in a predefined area. The area, the maximum number of people in it can be set
Limits of intelligent functions:	Only Intrusion Detection, Area Entrance, Area Exit, Line Crossing and Heat Meap can be used simultaneously.
Event Source:	Video tampering, network disconnected, IP address conflicted, motion, various AI functions, sudden audio increase-decrease

Intelligent Functions

Event Action:	Send e-mail, trigger alarm output, push notification for GSVM App and C-WERK, upload to FTP/Cloud, trigger HDD recording and/or image capture, show message on screen, PTZ linkage, voice prompt, buzzer
---------------	--

Approvals

Protection Rating:	IP67 (IEC 60529-2013), IK10 (IEC 62262:2002), NEMA 4X (NEMA 250-2018)
Regulation:	CE, FCC, RoHS Compliant
Standard:	ONVIF (Profile S, Profile G, Profile T, Profile M), SDK/API

Environmental

Operating Temperature:	-35 °C ~ 60 °C (-31 °F ~ 140 °F)
Humidity:	Less than 90%, non condensing

Electrical

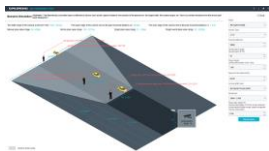
Supply Voltage:	12 VDC, PoE (IEEE 802.3af)
Power Consumption:	Max. 13.5 W

Mechanical

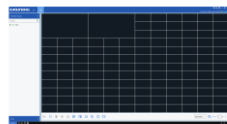
Mount:	Pan: 0° to 360°, tilt: 0° to 90°, rotation: 0° to 360°, 3-Axis Adjustment
Dimensions:	Ø 135 x 354 mm (Ø 5.3 x 13.94 inch)
Weight:	2000 g (4.4 lb)

Packaging

Package Dimensions:	425 x 190 x 180 mm (16.7 x 7.5 x 7.1 inch)
Package Weight:	2800 g (6.2 lbs)
Packaging Unit:	6
Bulk Package Dimensions:	585 x 370 x 440 mm (23 x 14.6 x 17.3 inch)
Bulk Package Weight:	18100 g (39.9 lbs)

Accessories

GU-SW-INST-TOOL



GU-SW-VMS



GU-SW-IP-FINDER



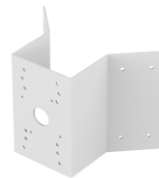
GU-SW-PLAYER



SD-kaart micro 128GB



SD-kaart micro 256GB

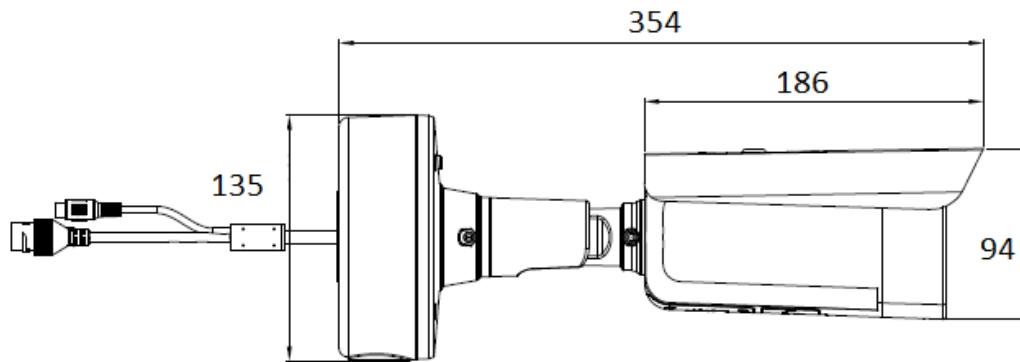


GU-BR-AMC01



GU-BR-AML01

Dimensions



Guarantee

All cameras in the "SMART", "PRO" and "PREMIUM" product lines have an extended warranty period of 5 years on electronic parts, mechanical wear and tear on moving parts is not included. Please note our general delivery terms and conditions.