

VIDEO PICTURE TRANSMISSION VIA PUBLIC/PRIVATE NETWORKS

- integrated multiplexer with 2 video inputs
- video transmission/remote setup via ISDN/POTS/GSM/TCP/IP
- parallel transmission of up to 2 camera signals
- 2 alarm inputs
- full screen display
- automatically establishes connection on alarm
- remote control of 1 relay (e.g. light, door opener)
- easy-to-install screws/terminals
- small housing dimensions
- optimum price/performance ratio

CamLine v.24



The CamLine V.24 system is designed to be used for fast transmission of JPEG, and full and differential image video pictures transmitted via public and private networks (ISDN, POTS(PSTN), GSM, LAN, WAN, Intranet, Internet). It opens up new dimensions in remote alarm signalling and alarm verification in commercial and private spheres.

CamLine V.24 provides live pictures of objects under observation when an alarm is triggered or each time it is manually dialed.

CamLine V.24 consists of a transmitter box with two camera connections, two alarm inputs, a relay output and the CamTel® Windowssoftware for the receiver PC.

CamLine V.24 has several interface and connection possibilities to enable it to be integrated into a variety of special application profiles. Two alarm-control inputs can be used for controlling camera selection and auto dial connection. A relay is also available which can be operated from the receiver PC via the software.

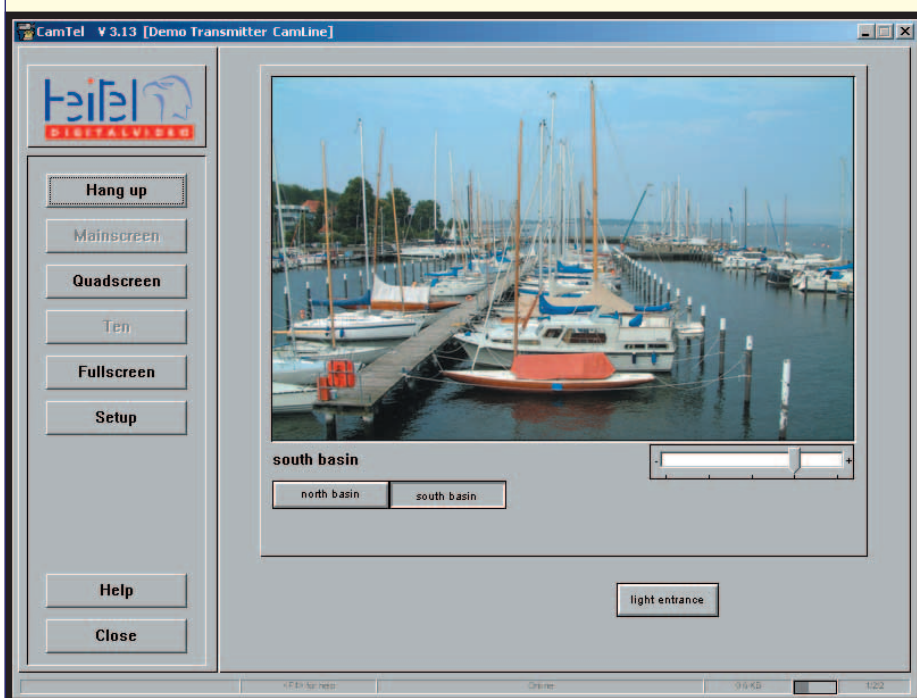
Due to its compact construction, CamLine V.24 is ideally suited for mobile operation (e.g. for building site surveillance), particularly when used with an additional GSM module.

CamLine V.24 can also be easily connected to central monitoring stations (see Cam-Control 4 brochure).

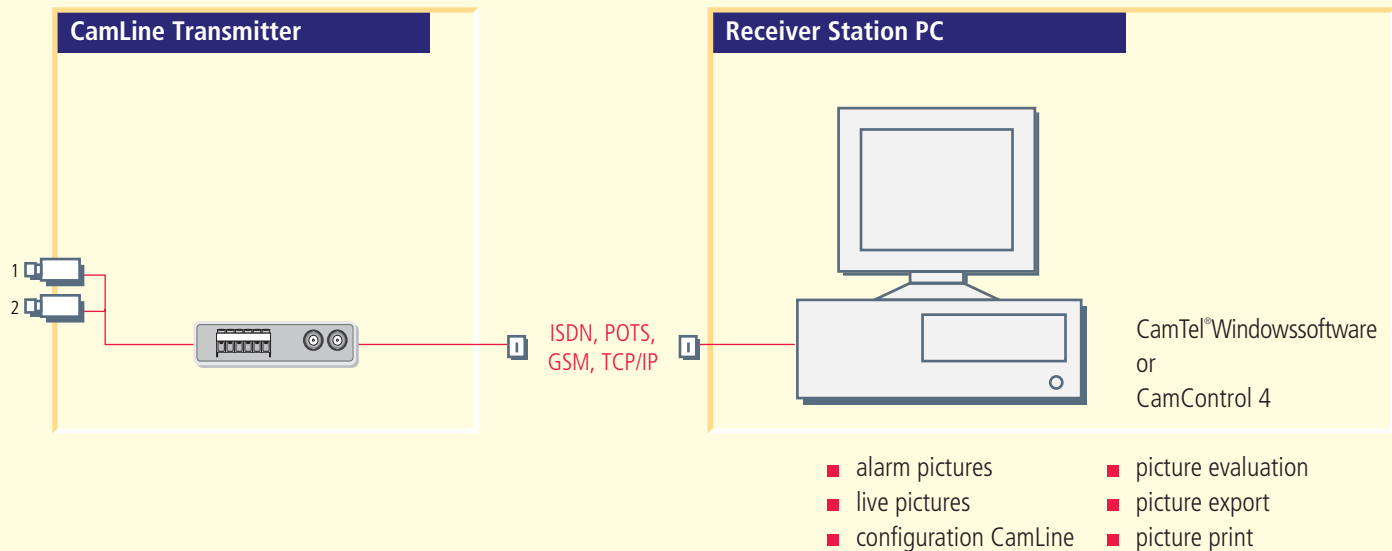
For the full range of functions of CamTel® Windowssoftware see separate brochure.

Recommended for security of:

- small shops/offices
- private households
- holiday homes
- boats/yachts
- elevators
- building sites



System Overview



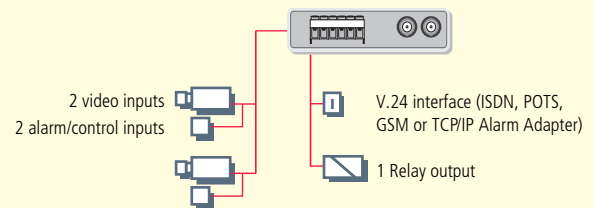
Technical Specifications

Model:	CamLine V.24
Power supply:	power adapter, 100V-240V AC 50/60Hz / 12V DC
Power consumption:	5 W
Ambient temperature:	+5°C up to +40°C, non-condensing
Dimensions:	116 x 30 x 180 (W x H x D mm)
Video inputs:	2 BNC socket: PAL/NTSC, 1Vpp
Impedance:	75 Ohm
Resolution:	512x256 pixels, 256x128 pixels, 128x80 pixels
Depth of colour:	16 Bit, 16.8 million colours
Compression system:	differential JPEG, adjustable in 5 steps
Transmission speed (ISDN):	depending on picture quality approx. 5 fps
Alarm/control inputs:	2 alarm/control inputs to trigger auto-dial
Relay output:	1 alternate relay, max. 48 V, 0.2 A, activation via software
V.24 serial interface:	9 pin SUB-D connector with RS-232 interface for ISDN-TA, Modem or TCP/IP Alarm Adapter

Hardware Requirements

PC:	IBM-compatible PC
CPU:	min. Pentium 200 MHz
Memory:	min. 32 MB
COM interface:	UART 16550 recommended with ext. modem, ISDN-TA or ISDN-card: for example AVM-Fritz
Graphics:	VGA-card min. 32,768 colours or 65,535 colours, resolution 1024x768 pixels recommended
Operation system:	Windows 95/98/2000/XP/NT 4.0

Connection Diagram



Your authorized dealer: