

## Smart-Sight

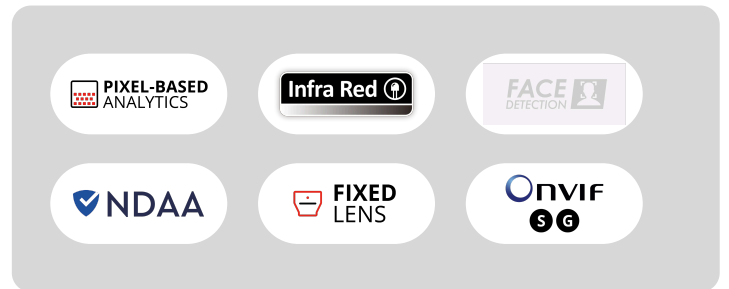
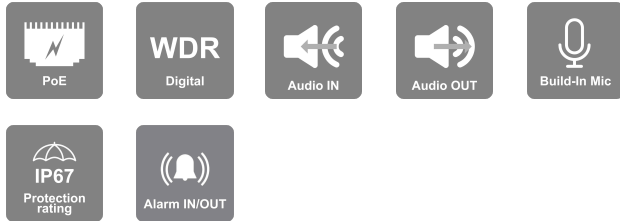
The series offers a range of AI Cameras for diverse surveillance needs. Every camera delivers superior performance and accuracy with advanced technology and purposeful design. Each component is chosen for seamless integration and optimal functionality. Whether it's fixed or motorized lenses, License Plate Recognition, or Thermal cameras, The Smart-Sight series is for you.



# FEI-2120IPN

## 12MP Fixed Lens Fish-Eye Camera with IR LED

Ideal for large open spaces, this 12MP Panoramic Fisheye Anti-Vandal camera can capture footage at a wide angle of 360°. The camera includes a built-in microphone, Digital WDR, BLC, HLC, and 3D-DNR for poor light conditions. Our Fisheye camera FEI-2120IPN can do the work of multiple fixed focus lens cameras.



## MAIN FEATURES

- FEI-2120IPN 12MP Fixed Lens Fish-Eye Camera with IR LED
- Sensor: 1/1.7" CMOS (3000 x 3000 – 16:9)
- Resolution: 3000x3000 (1:1) 25/30FPS (12MP)
- Lens: 1.65mm (360° for Ceiling Mount / 180° For Wall Mount)
- True Day&Night – ICR
- Illumination: 15m (4 High-Power IR LEDs)
- Compression: H.265+ / H.264+ / H.265 / H.264 / MJPEG
- AI: DDA Human Only in Ceiling Installation: Line Crossing, Sterile Area, Area Entry, Area Exit, Object Counting, Heat Map
- AI: DDA all objects: in Wall/Desktop Installation: Line Crossing, Sterile Area, Area Entry, Area Exit, Object Counting

- Digital WDR, BLC, HLC, ROI
- SD Card: Event/Schedule Record (Up to 256GB)
- Alarm in + Alarm out
- Built-In Microphone + Audio Input + Audio Output
- ONVIF: Profile S/G
- Water Proof: IP67
- Weight: ~530g
- Power: DC12V/~700mA / PoE/~10.5W



VSSNEDERLAND.NL

## SPECIFICATIONS

NDAA Compliant	
NDAA Compliant	Yes
Video	
Image Sensor	1/1.7" CMOS (3000 x 3000 - 16:9)
Effective Pixels	3000x3000 (1:1)
Electronic Shutter	1/3s ~ 1/100000s
Day & Night	ICR
Min. Illumination	0.01lux (@F2.0, AGC on) 0lux with IR on
Audio	
Audio compression	G.711A/G.711U
Communication	Two-Way Audio
Image	
Image Settings	AWB, AGC Adjustable, Exposure Mode (Auto) Sharpness, Saturation, Brightness & Contrast Adjustable
Image Enhancement	Digital WDR, BLC, HLC, ROI
Noise Reduction	3D-DNR
Image Orientation	360
Privacy Zone	Yes
Events and Analytics	
Analytics	AI: DDA Human Only in Ceiling Installation: Line Crossing, Sterile Area, Area Entry, Area Exit, Object Counting, Heat Map AI: DDA all objects: in Wall/Desktop Installation: Line Crossing, Sterile Area, Area Entry, Area Exit, Object Counting
Motion Detection	Yes
Compression	
Resolution	12MP(4000x3000), 9MP(3000x3000), 5MP(2160x2160), 2MP(1080x1080), 960x960, 720x720, 480x480
Frame Rate	1-25/30FPS
Video Compression	H.265+/ H.264+ / H.265 / H.264 / MJPEG**

<p><b>Multi-Stream</b></p>	<p>Mode1: Fisheye Fisheye view (main stream): 3000×3000/2160×2160/1080×1080 (50Hz: 1~25fps; 60Hz: 1~30fps) Fisheye view (sub stream): 1440×1440/720×720/480×480 (50Hz: 1~25fps; 60Hz: 1~30fps) Fisheye view (third stream): 960×960/ 640×640/360×360(50Hz: 1~25fps; 60Hz: 1~30fps) Mode2: Panoramic Panoramic view (main stream): 4000×3000/3840×2160/3200×1800/2560×1440 (50Hz:1~20fps; 60Hz:1~20fps) Panoramic view (sub stream): 1920×1080/ 960×540/640×480 (50Hz:1~20fps; 60Hz:1~20fps) Panoramic view (third stream): 1280×720/640×360 (50Hz:1~20fps; 60Hz:1~20fps) Mode 3: Fisheye+Panoramic+3 PTZ Fisheye view (main stream): 3000×3000/2160×2160/1080×1080 (50Hz: 1~15fps; 60Hz:1~15fps) Fisheye view (sub stream): 1440×1440/720×720/480×480 (50Hz: 1~15fps; 60Hz:1~15fps) Fisheye view (third stream): 960×960/ 640×640/360×360 (50Hz: 1~15fps; 60Hz:1~15fps) Panoramic view (main stream): 4000×3000/3840×2160/3200×1800/2560×1440 (50Hz:1~10fps; 60Hz: 1~10fps) Panoramic view (sub stream): 1920×1080/ 960×540/640×480 (50Hz:1~10fps; 60Hz: 1~10fps) Panoramic view (third stream): 1280×720/640×360(50Hz:1~10fps; 60Hz: 1~10fps) 3PTZ view: (1280×720) * 3 (50Hz:1~15fps; 60Hz: 1~15fps) Mode 4 Fisheye+ 4 PTZ Fisheye view (main stream): 3000×3000/2160×2160/1080×1080 (50Hz: 1~25fps; 60Hz:1~30fps) Fisheye view (sub stream): 1440×1440/720×720/480×480 (50Hz: 1~25fps; 60Hz:1~30fps) Fisheye view (third stream): 960×960/ 640×640/360×360 (50Hz: 1~25fps; 60Hz:1~30fps) 4PTZ view : (1280×720) * 4 (50Hz:1~15fps; 60Hz: 1~15fps) Mode5 Fisheye+ 4 PTZ Fusion Fisheye view (main stream): 3000×3000/2160×2160/1080×1080 (50Hz: 1~25fps; 60Hz:1~30fps) Fisheye view (sub stream): 1440×1440/720×720/480×480 (50Hz: 1~25fps; 60Hz:1~30fps) Fisheye view (third stream): 960×960/ 640×640/360×360 (50Hz: 1~25fps; 60Hz:1~30fps) 4PTZ fusion view (main stream): 2560×1440 (50Hz:1~20fps; 60Hz: 1~20fps) 4PTZ fusion view (sub stream): 640×360 (50Hz:1~20fps; 60Hz: 1~20fps)</p>
<p><b>Bit Rate</b></p>	<p>128Kbps ~ 16Mbps@H.265 / 128Kbps ~ 16Mbps@H.264</p>
<p><b>Encode Mode</b></p>	<p>VBR/CBR</p>
<p><b>Image Quality</b></p>	<p>Five levels under VBR; Free adjustment under CBR</p>
<p><b>Lens</b></p>	
<p><b>Lens (Field of View)</b></p>	<p>1.65mm (360° for Ceiling Mount / 180° For Wall Mount)</p>
<p><b>Iris</b></p>	<p>Fixed Iris</p>
<p><b>Lens Mount</b></p>	<p>M12 Mount</p>

Network	
<b>User Access</b>	Supports simultaneous monitoring of up to 6 users with multi-stream real-time transmission
<b>Network Protocol</b>	IPv4, IPv6, TCP, UDP, DHCP, NTP, DDNS, 802.1X, RTSP, Multicast, UPnP, Email, FTP, HTTPS, QoS
<b>Remote Monitoring</b>	IE Browsing, Ossia VMS Software, Provision Cam2 Mobile App
<b>Ethernet</b>	100Mbps
<b>ONVIF</b>	Profile S/G
Connectivity	
<b>Network</b>	RJ45 (+PoE)
<b>Audio Connectivity</b>	Built-In Microphone + Audio Input + Audio Output
<b>Alarm</b>	Alarm in + Alarm out
<b>SD Card</b>	Event/Schedule based Main/Substream recording (Up to 256GB)
<b>Wiegand</b>	No
<b>Power</b>	DC Socket
<b>Analog Video Output</b>	CVBS (BNCx1)

Housing	
PoE	Yes
Illumination	15m (4 High-Power IR LEDs)
Power Supply	DC12V/~700mA / PoE/~10.5W
Protection Rate	Water Proof: IP67
Work Environment	-30°C~60°C, 10%~90% Humidity
Bracket	No
Dimensions	Φ130mm×46mm
Weight (gross)	~530g
Hard Reset Button	Yes

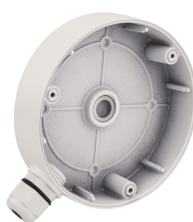
## ACCESSORIES



PR-WB50



PR-CB50



PR-B50JB

Sinds 2014 gedistribueerd door



**VSS Nederland B.V.**

Telfordstraat 11M

8013 RL Zwolle

Tel: (038) 4289420

Email: [info@vssnederland.nl](mailto:info@vssnederland.nl)

Web: [www.vssnederland.nl](http://www.vssnederland.nl) | [www.provision-isr.nl](http://www.provision-isr.nl)

Facebook

LinkedIn

Youtube

