

Bracket matching system



Click on the Camera to check installation bracket



Click [HERE](#) to check full bracket system

Bracket matching system



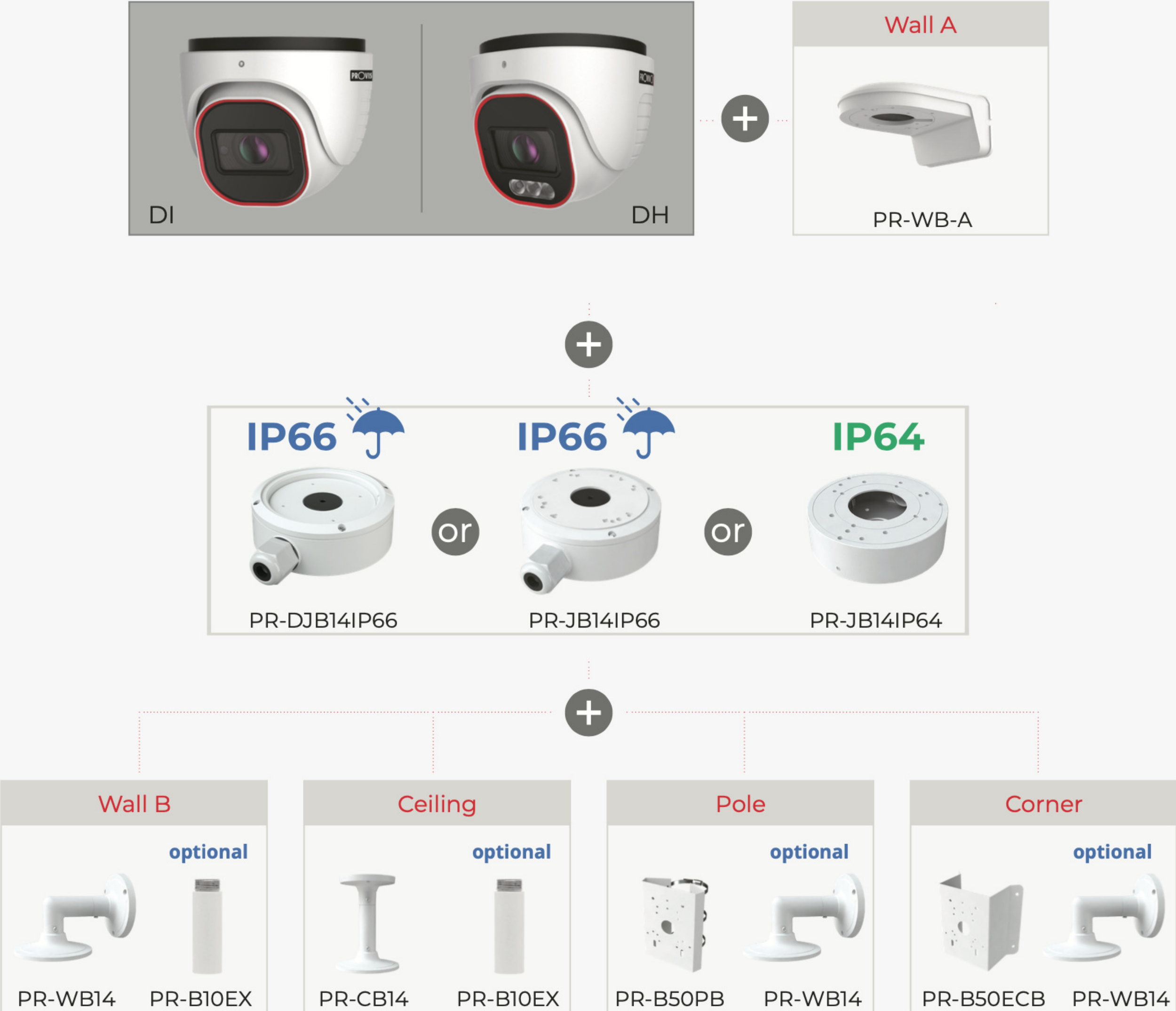
For DI-Fixed Lens, DV-Fixed Lens, DH-Fixed Lens



Bracket matching system



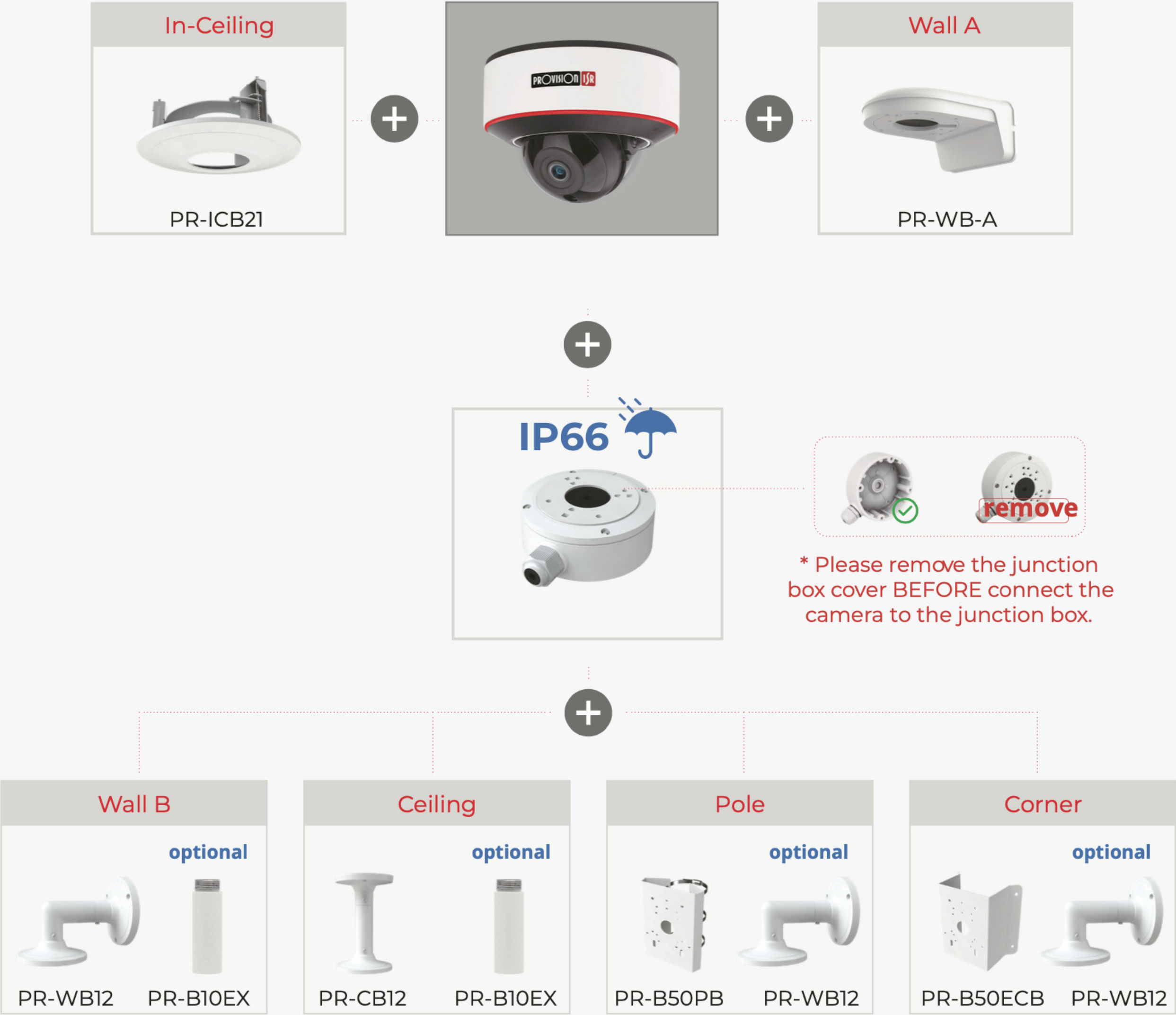
For DI-VF Lens, DI-MVF Lens, DH-MVF Lens



Bracket matching system



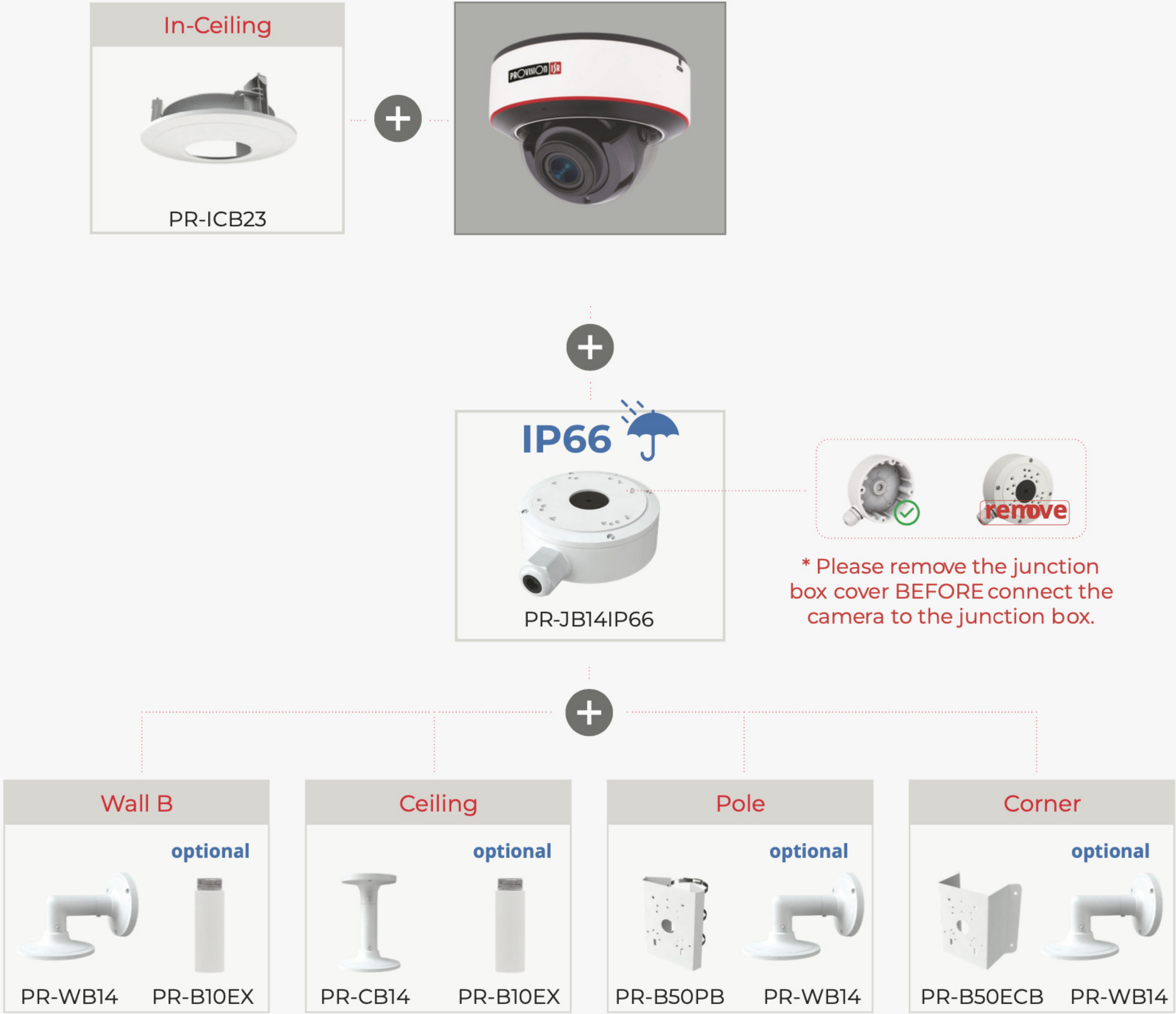
For DAI-Fixed Lens



Bracket matching system



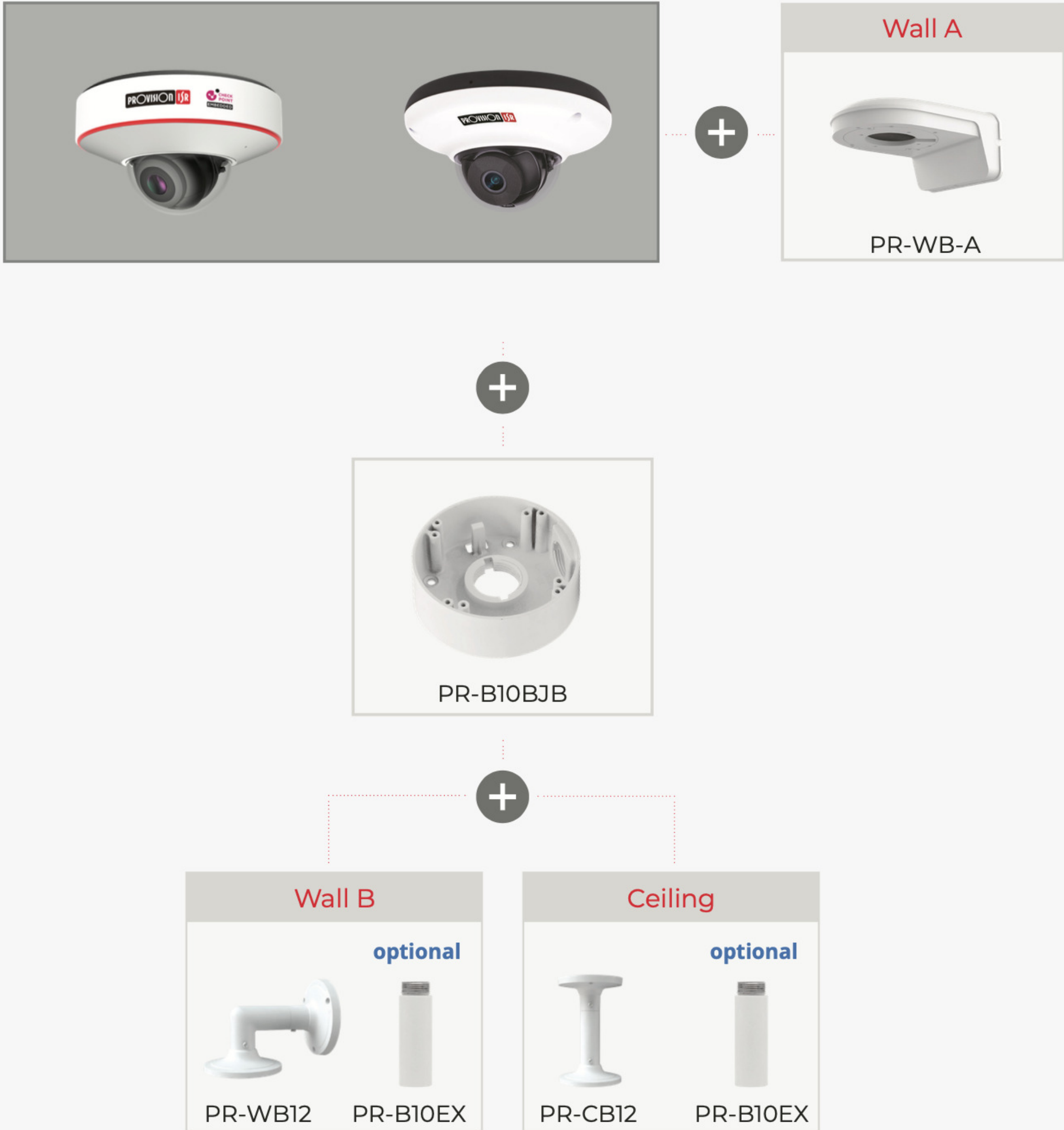
For DAI-VF Lens, DAI-MVF Lens



Bracket matching system



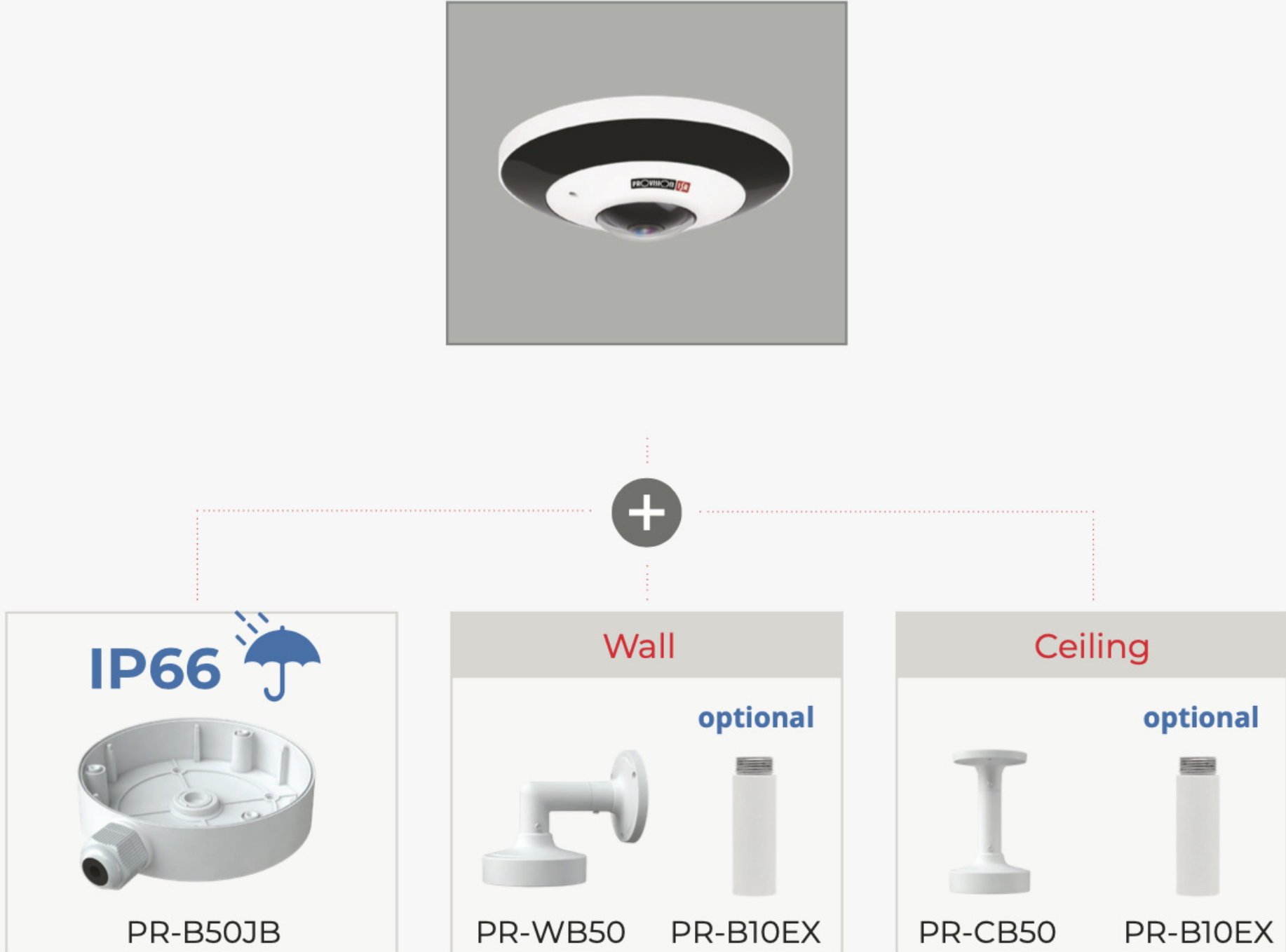
For DMA



Bracket matching system



For FEI



Bracket matching system



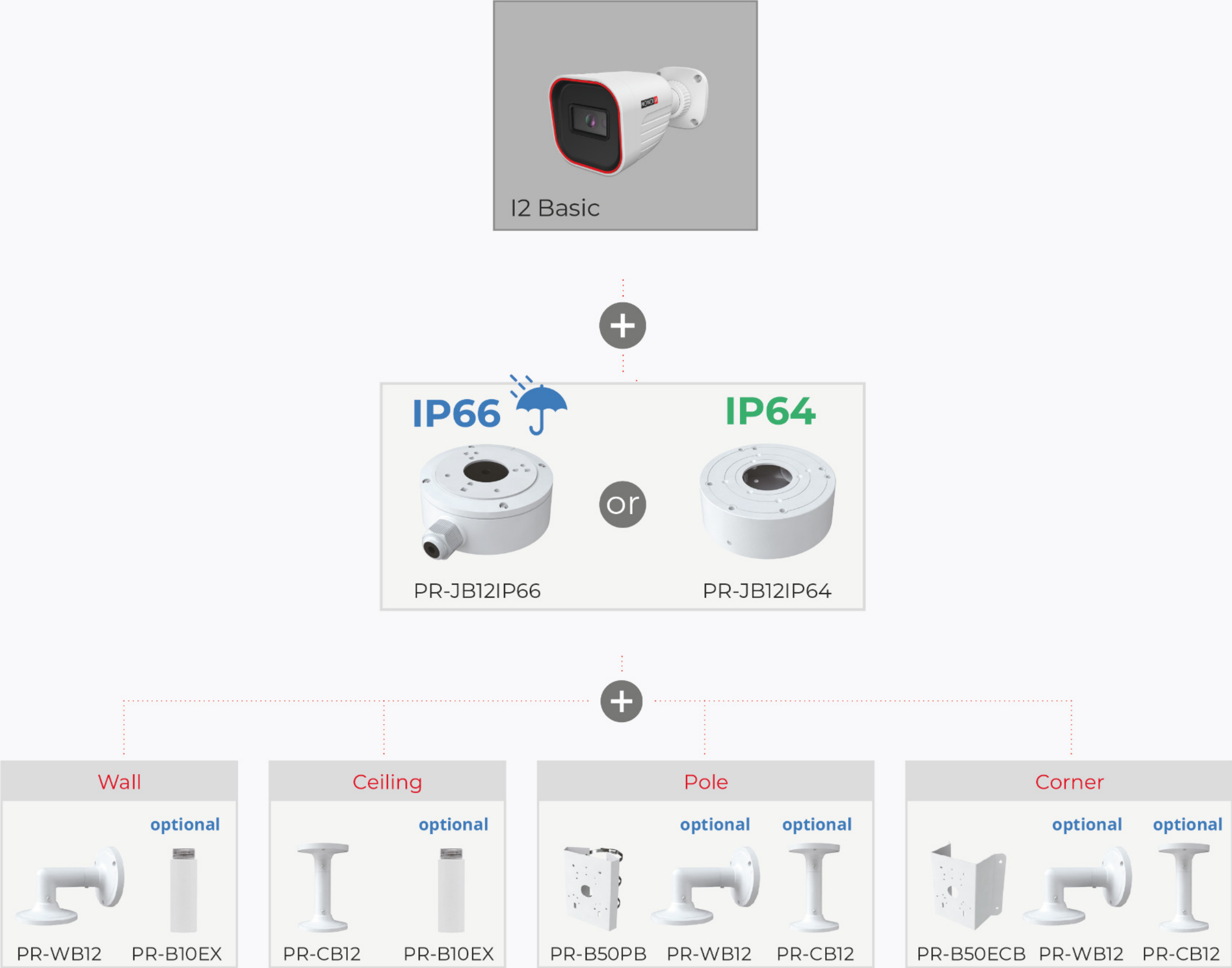
DI Basic



Bracket matching system



I2 Basic



Bracket matching system



For I5PT / I8PT



+



+

Wall B

optional

PR-WB14 PR-B10EX

Ceiling

optional

PR-CB14 PR-B10EX

Pole

PR-B50PB

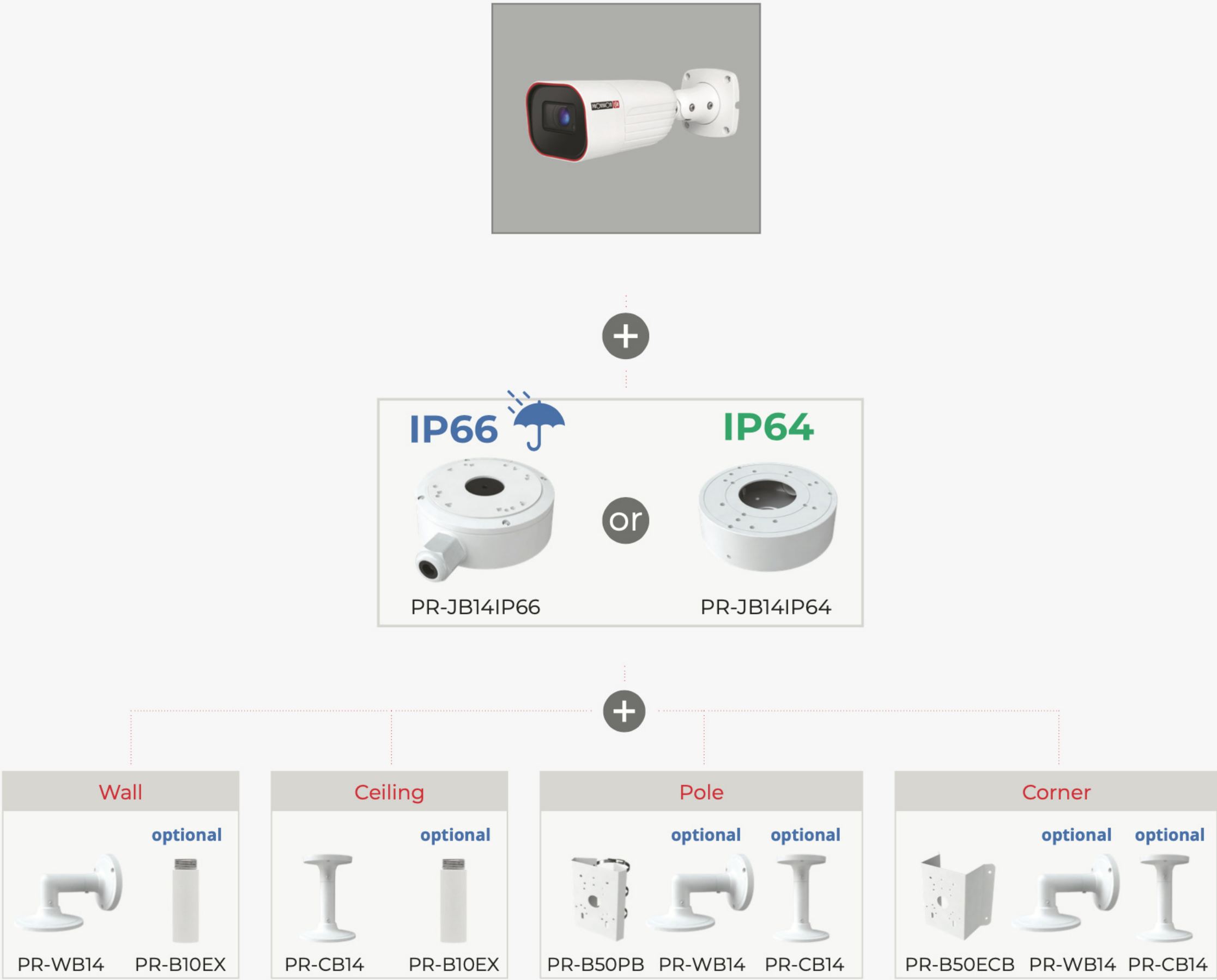
Corner

PR-B50ECB

Bracket matching system



For Bullet I6-VF Lens, I6-MVF Lens, BLH-MVF Lens



Bracket matching system



For I4-Fixed Lens, I4-VF Lens, I4-MVF Lens, BMV-Fixed Lens & BMH-Fixed Lens, BMH-MVF Lens



Bracket matching system



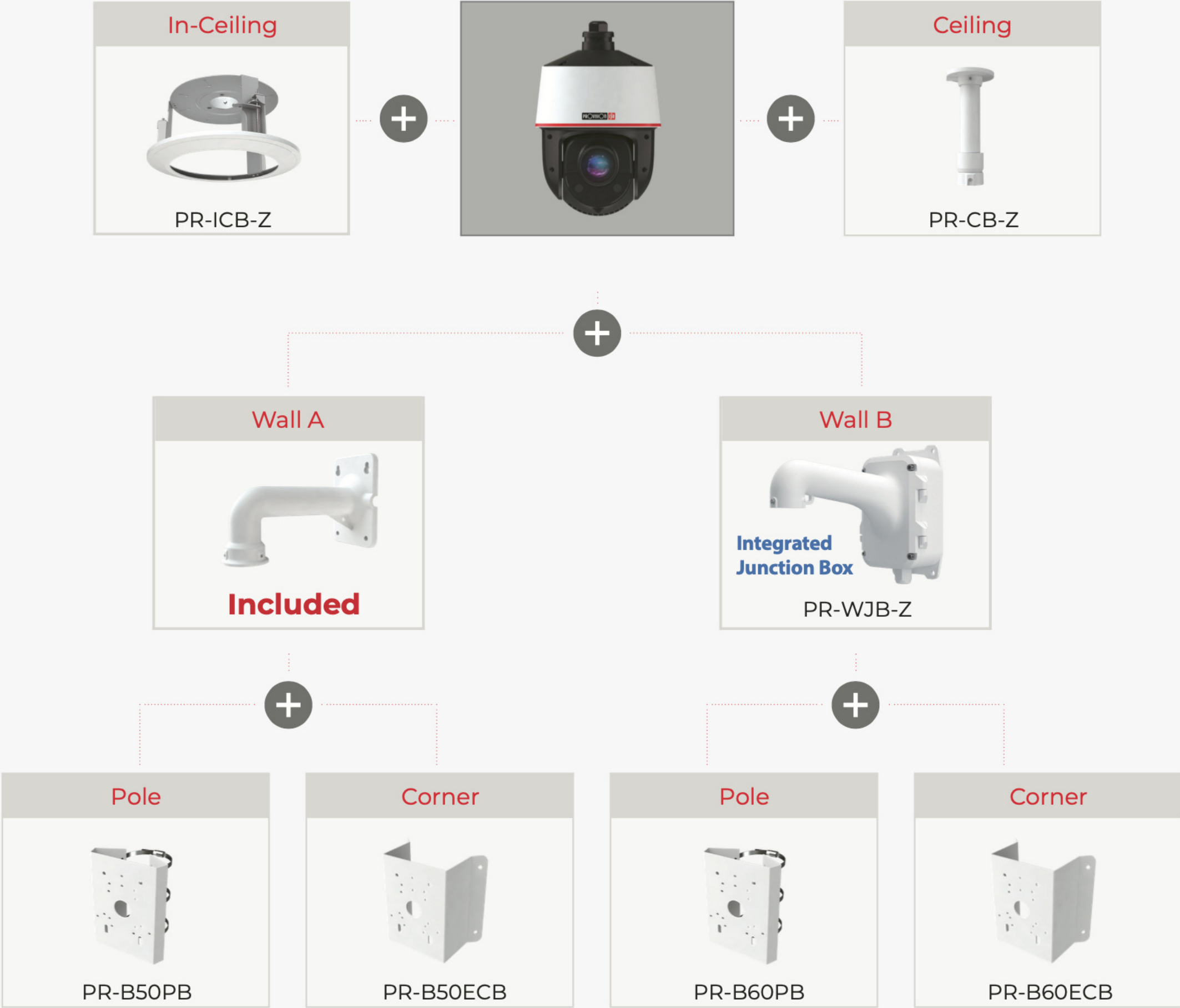
For I2-Fixed Lens & BSV-Fixed Lens



Bracket matching system



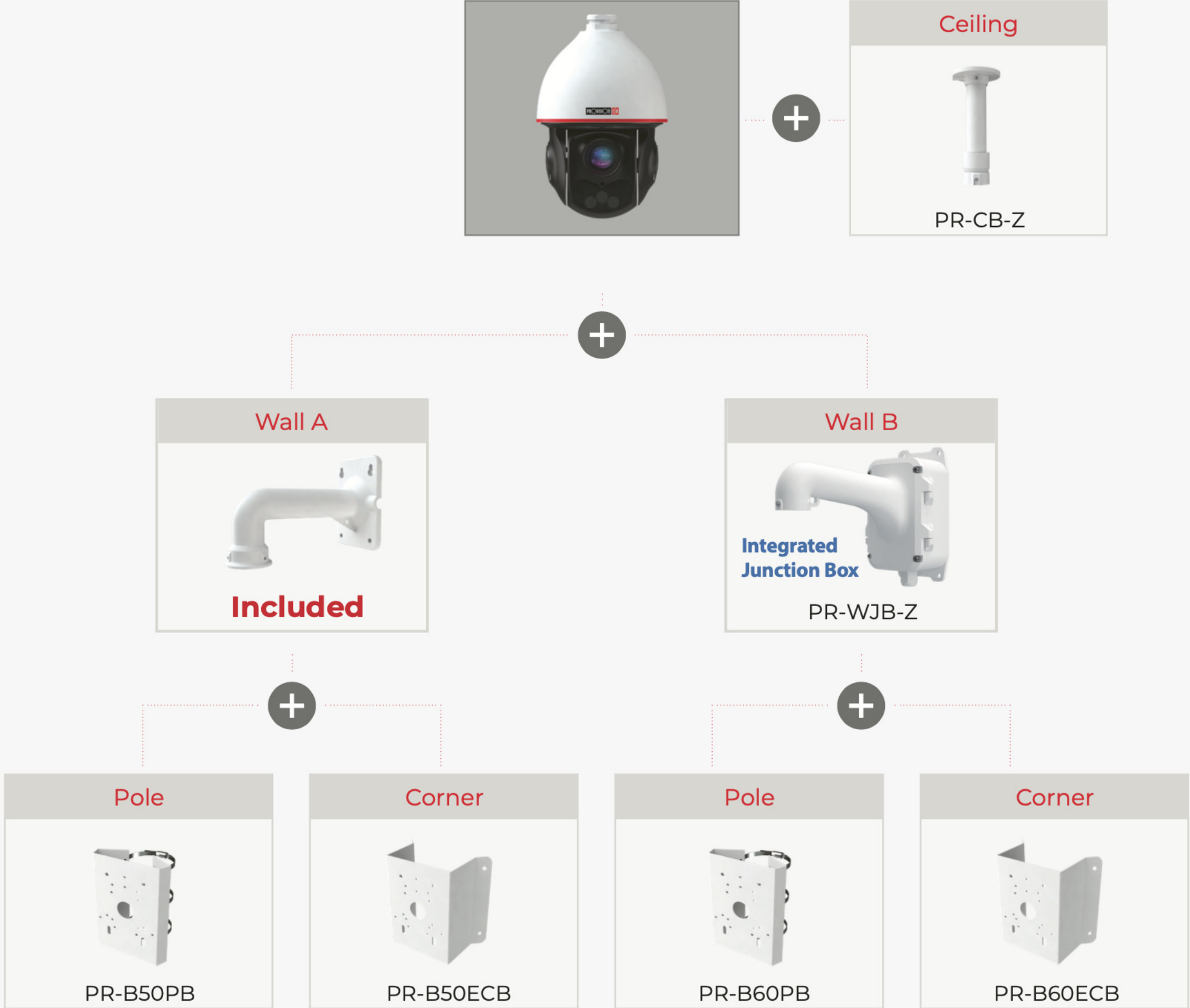
For PTZ-Z4



Bracket matching system



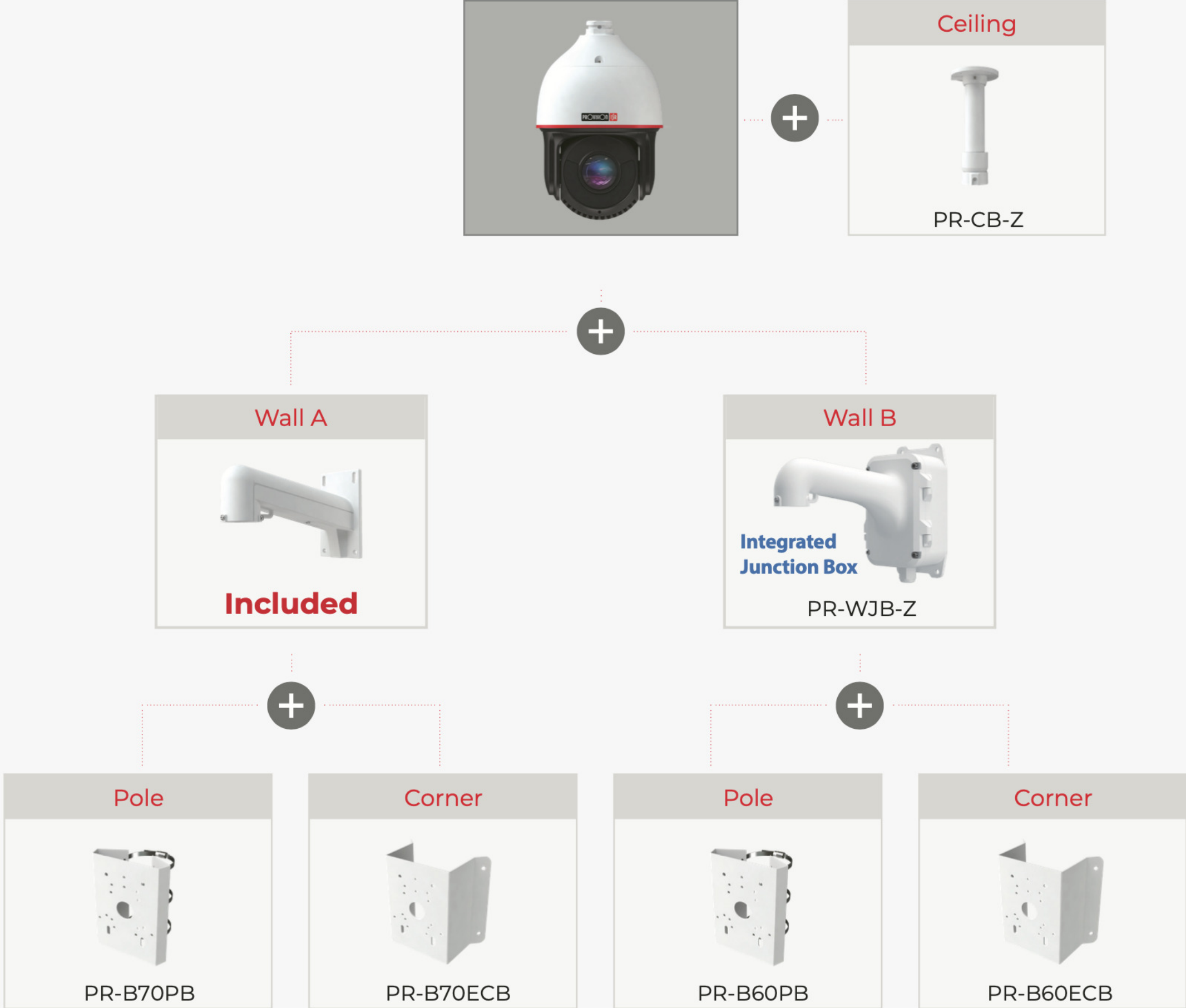
For PTZ-Z5



Bracket matching system



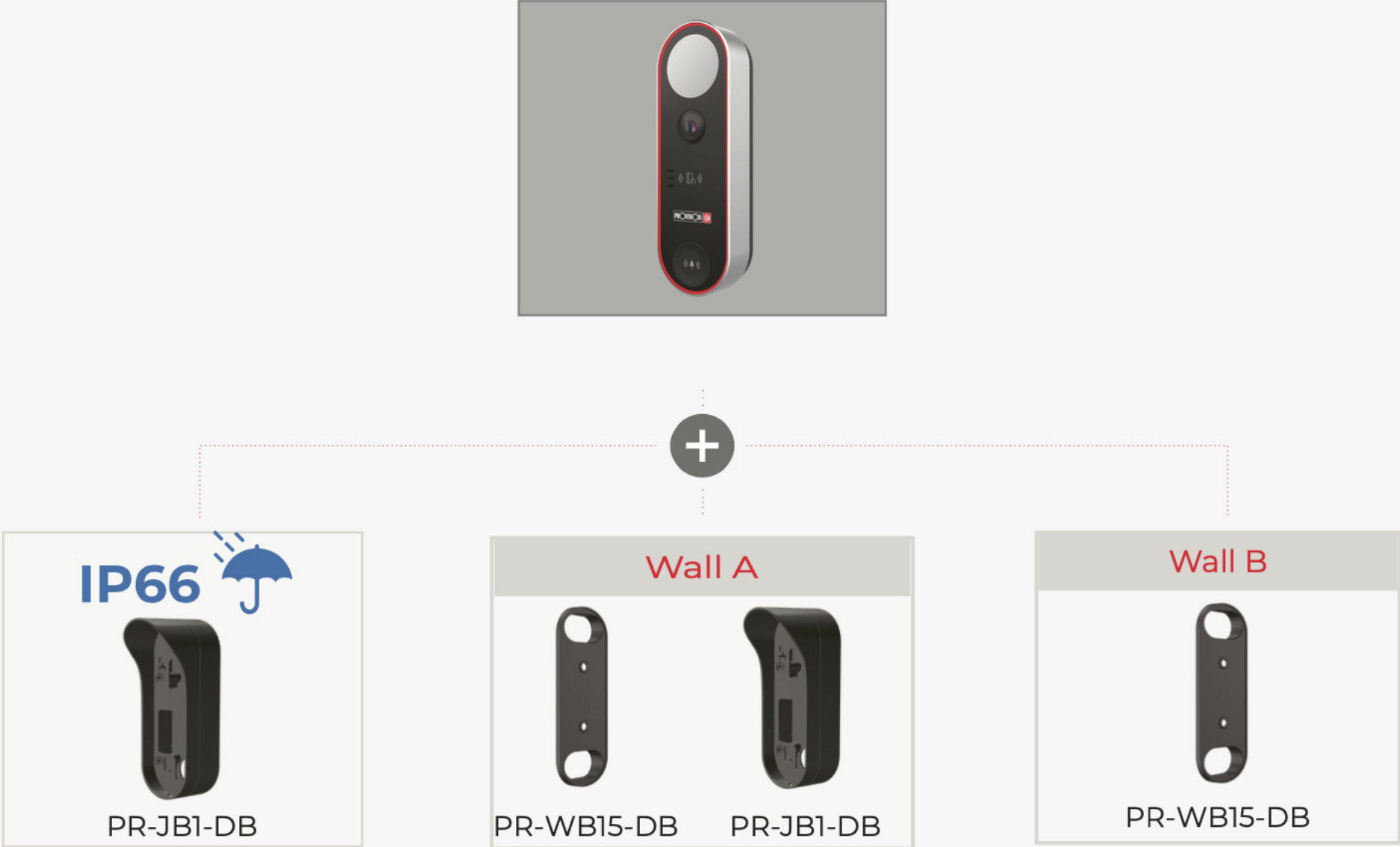
For PTZ-Z6



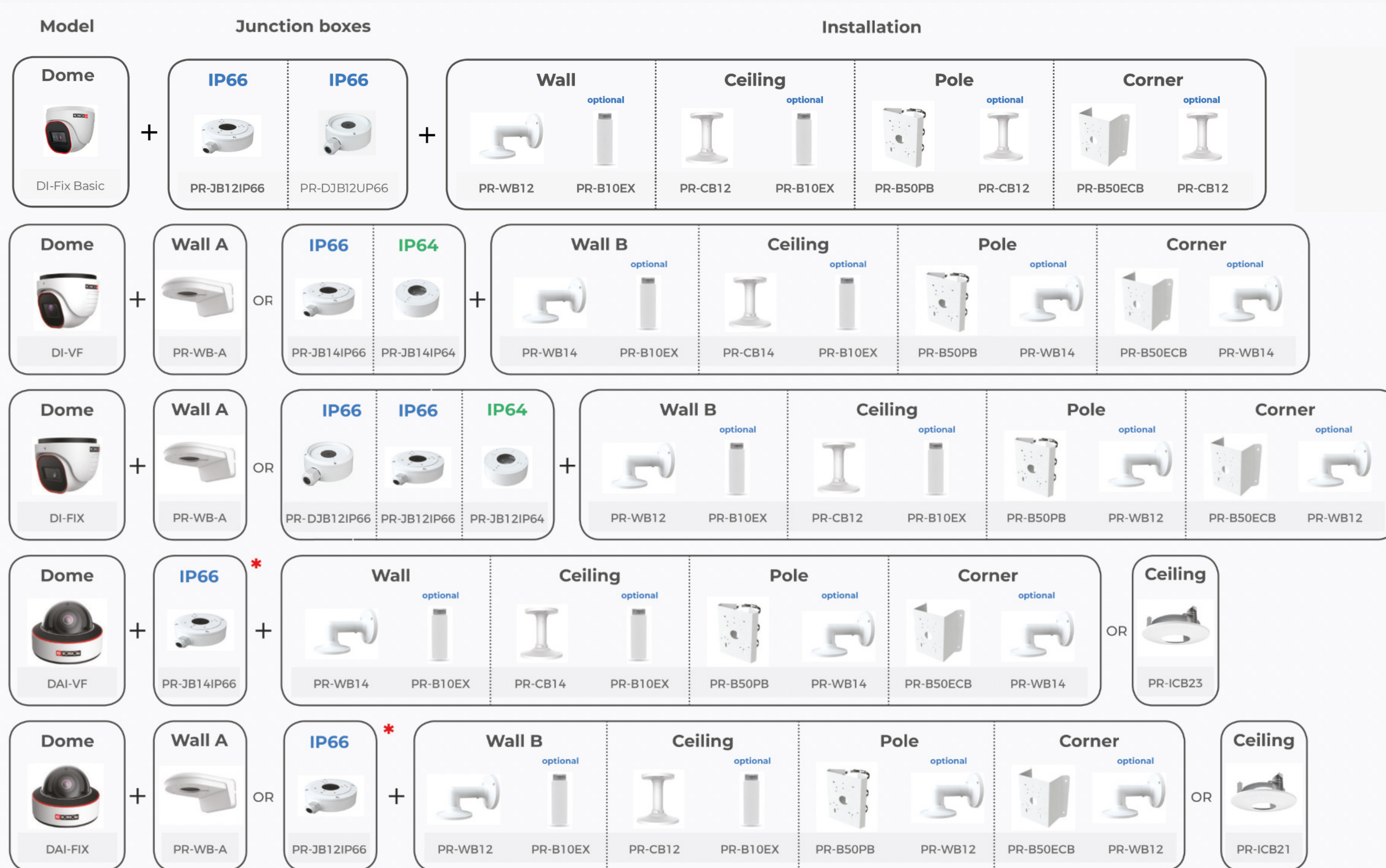
Bracket matching system



For DB-320WIPN



Bracket matching system



Next page >

Bracket matching system



<p>Dome</p> <p>DMA</p>	<p>Wall A</p> <p>PR-WB-A</p>	OR	<p>PR-B10B3B</p>	<p>Wall B</p> <p>PR-WB12</p> <p><i>optional</i></p> <p>PR-B10EX</p>	<p>Ceiling</p> <p>PR-CB12</p> <p><i>optional</i></p> <p>PR-B10EX</p>		
<p>Bullet</p> <p>I2-Fix Basic</p>	<p>IP66</p> <p>PR-JB12IP66</p>	<p>IP64</p> <p>PR-JB12IP64</p>	+	<p>Wall</p> <p>PR-WB12</p> <p><i>optional</i></p> <p>PR-B10EX</p>	<p>Ceiling</p> <p>PR-CB12</p> <p><i>optional</i></p> <p>PR-B10EX</p>	<p>Pole</p> <p>PR-B50PB</p> <p><i>optional</i></p> <p>PR-CB12</p>	<p>Corner</p> <p>PR-B50ECB</p> <p><i>optional</i></p> <p>PR-CB12</p>
<p>Bullet</p> <p>I6</p>	<p>IP66</p> <p>PR-JB14IP66</p>	<p>IP64</p> <p>PR-JB14IP64</p>	+	<p>Wall</p> <p>PR-WB14</p> <p><i>optional</i></p> <p>PR-B10EX</p>	<p>Ceiling</p> <p>PR-CB14</p> <p><i>optional</i></p> <p>PR-B10EX</p>	<p>Pole</p> <p>PR-B50PB</p> <p><i>optional</i></p> <p>PR-CB14</p>	<p>Corner</p> <p>PR-B50ECB</p> <p><i>optional</i></p> <p>PR-CB14</p>
<p>Bullet</p> <p>I4</p>	<p>IP66</p> <p>PR-JB12IP66</p>	<p>IP64</p> <p>PR-JB12IP64</p>	+	<p>Wall</p> <p>PR-WB12</p> <p><i>optional</i></p> <p>PR-B10EX</p>	<p>Ceiling</p> <p>PR-CB12</p> <p><i>optional</i></p> <p>PR-B10EX</p>	<p>Pole</p> <p>PR-B50PB</p> <p><i>optional</i></p> <p>PR-CB12</p>	<p>Corner</p> <p>PR-B50ECB</p> <p><i>optional</i></p> <p>PR-CB12</p>
<p>Bullet</p> <p>I2</p>	<p>IP66</p> <p>PR-JB12IP66</p>	<p>IP64</p> <p>PR-JB12IP64</p>	+	<p>Wall</p> <p>PR-WB12</p> <p><i>optional</i></p> <p>PR-B10EX</p>	<p>Ceiling</p> <p>PR-CB12</p> <p><i>optional</i></p> <p>PR-B10EX</p>	<p>Pole</p> <p>PR-B50PB</p> <p><i>optional</i></p> <p>PR-CB12</p>	<p>Corner</p> <p>PR-B50ECB</p> <p><i>optional</i></p> <p>PR-CB12</p>

Next page >

Bracket matching system



PTZ Z4 +

Wall INCLUDED OR PR-WJB-Z <i>Integrated Junction Box</i>	Ceiling PR-CB-Z	In-Ceiling PR-ICB-Z	Pole PR-B50PB + INCLUDED	Corner PR-B50ECB + INCLUDED	Pole PR-B60PB + PR-WJB-Z	Corner PR-B60ECB + PR-WJB-Z
---	---------------------------	-------------------------------	------------------------------------	---------------------------------------	------------------------------------	---------------------------------------

PTZ Z5 +

Wall INCLUDED OR PR-WJB-Z <i>Integrated Junction Box</i>	Ceiling PR-CB-Z		Pole PR-B50PB + INCLUDED	Corner PR-B50ECB + INCLUDED	Pole PR-B60PB + PR-WJB-Z	Corner PR-B60ECB + PR-WJB-Z
---	---------------------------	--	------------------------------------	---------------------------------------	------------------------------------	---------------------------------------

PTZ Z6 +

Wall INCLUDED OR PR-WJB-Z <i>Integrated Junction Box</i>	Ceiling PR-CB-Z		Pole PR-B70PB + INCLUDED	Corner PR-B70ECB + INCLUDED	Pole PR-B60PB + PR-WJB-Z	Corner PR-B60ECB + PR-WJB-Z
---	---------------------------	--	------------------------------------	---------------------------------------	------------------------------------	---------------------------------------

Doorbell DB-320WIPN +

Wall A PR-JB1-DB <i>IP65</i>	OR	Wall B PR-WB15-DB PR-JB1-DB <i>IP65</i>	Wall C PR-WB15-DB
---	----	--	-----------------------------