

Videodeurbel

Verkorte installatie handleiding (E)



APP

Device

Use your phone to scan the QR code to download the mobile APP

Use the mobile APP to scan the QR code to quickly add the camera

About This Manual

All pictures, images, icons and snapshots in this manual are for reference only. If there is inconsistency between the manual and the actual product, the actual product shall prevail. The manual will be updated according to the product improvement and are subject to change without prior written notice.

Legal Disclaimer

To the maximum extent permitted by applicable law, the product described, with its hardware, software, firmware, is provided "as is", with all faults and errors, and our company makes no warranties, express or implied, including particular purpose, and non-infringement of third party. In no event will our company, offices, or agents be liable to you for any special, consequential, incidental, or indirect damages, including, among others, damages for loss of business profits, business interruption, or loss of data or documentation, in connection with the use of this product, even if our company has been advised of the possibility of such damages. With regard to the product with internet access, the use of product shall be wholly at your own risks. Our company shall be irresponsible for abnormal operation, privacy leakage or other damages resulting from cyber attack, hacker attack, virus infection, or other internet security risks; however, our company will provide timely technical support if necessary. During the use of the device, please strictly abide by applicable law. In the event of any conflicts between this manual and the applicable law, the later prevails.

Installation and Use

Please use our product according to the following safety instructions and warnings.

Do not place the camera in extremely hot, cold, or damp location.
Do not expose it to high electromagnetic radiation.

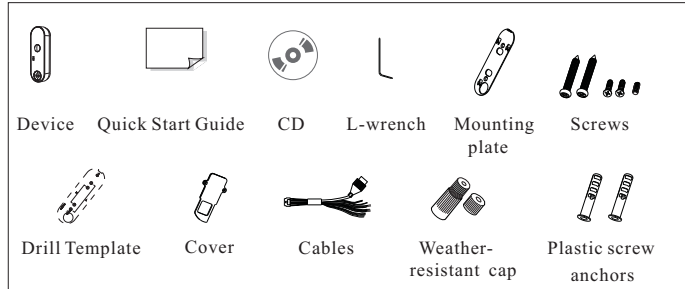
If the product does not work properly, please contact your dealer or the nearest service center. Never attempt to disassemble the camera yourself. (We shall not be responsible for any problems caused by unauthorized repair or maintenance.)

Do not drop the camera or subject it to physical shock.
Keep away from liquid while in use.

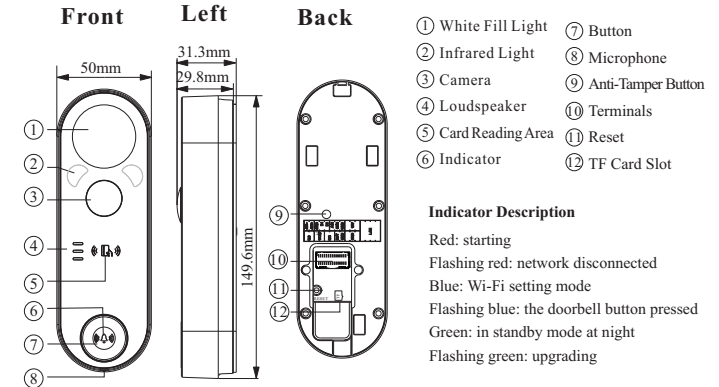
Do not touch the screen with sharp objects.

If cleaning is necessary, please use clean cloth to wipe it gently, avoiding water or alcohol.

1 Package

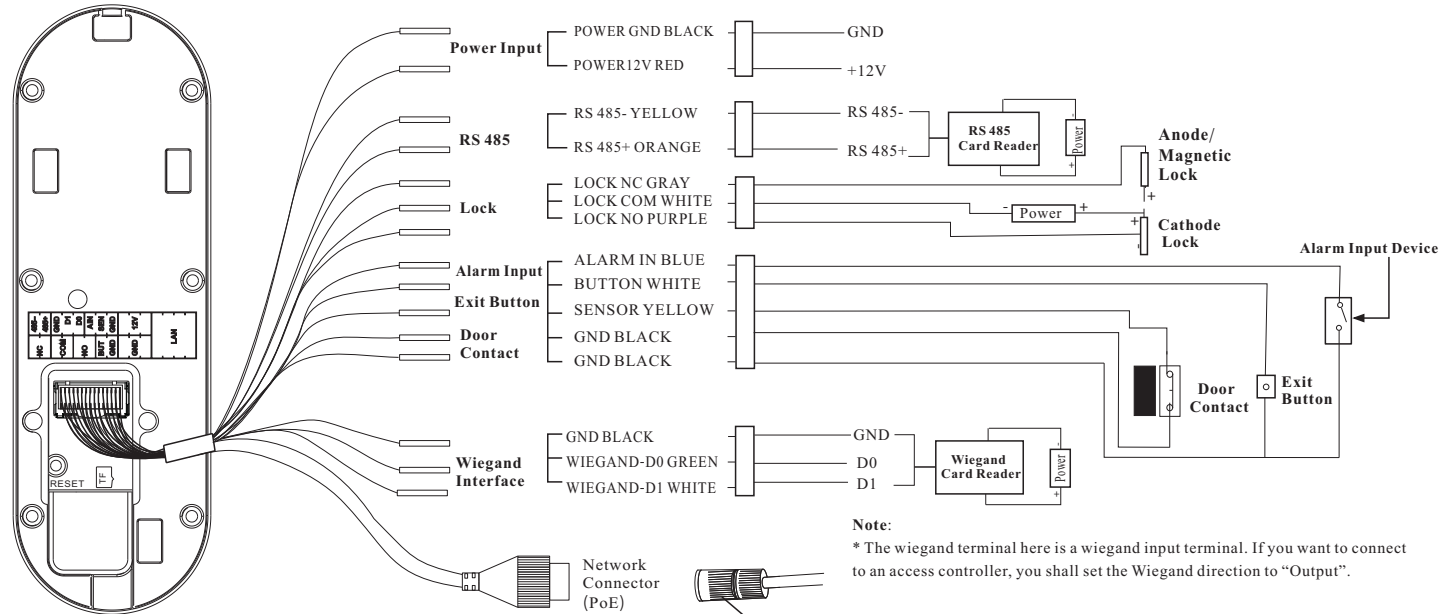


2 Overzicht

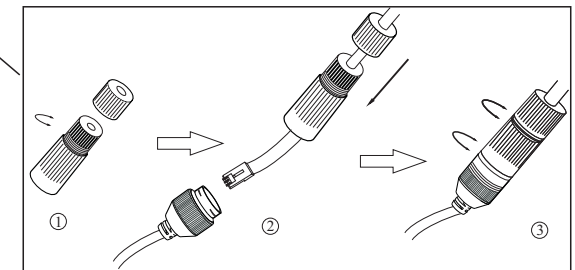


Indicator Description
Red: starting
Flashing red: network disconnected
Blue: Wi-Fi setting mode
Flashing blue: the doorbell button pressed
Green: in standby mode at night
Flashing green: upgrading

Aansluitingen (kabel)

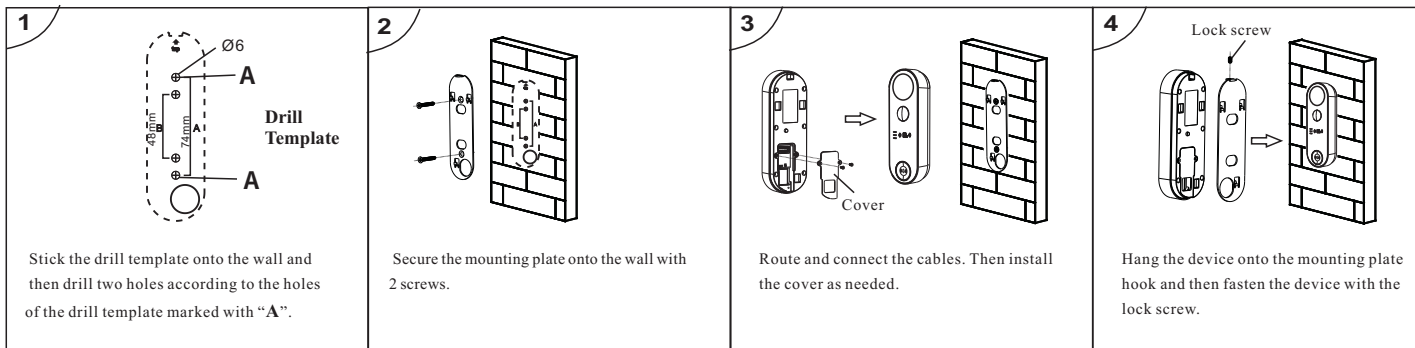


- Loosen the nut from the main element.
- Run the network cable (without RJ 45 connector) through the both elements. Then crimp the cable with RJ 45 connector.
- Connect the cable to the network connector. Then tighten the nut and the main cover.

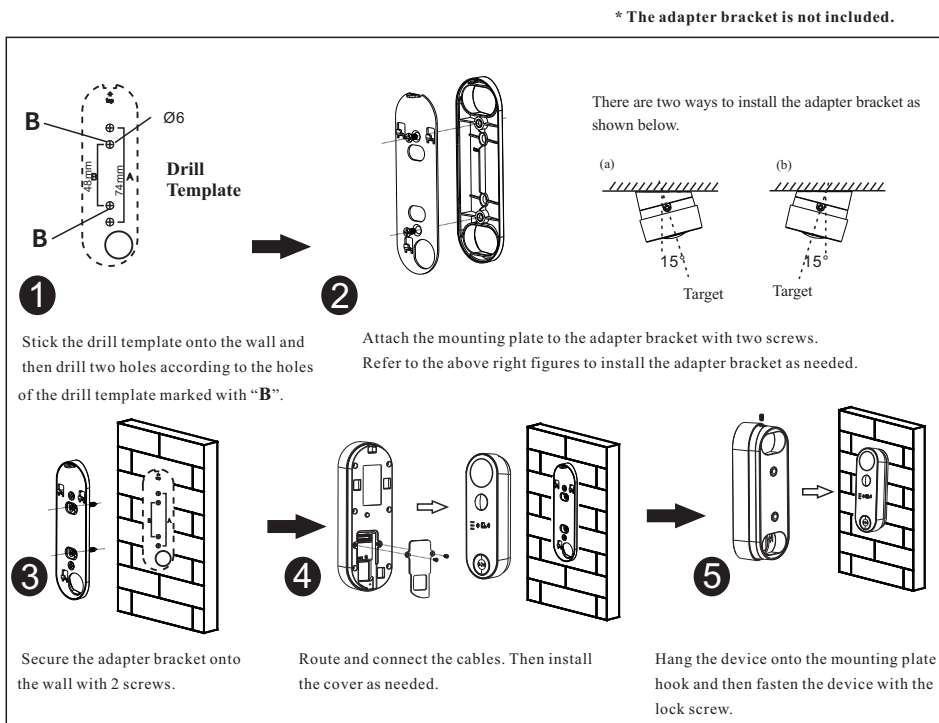


4 Installation

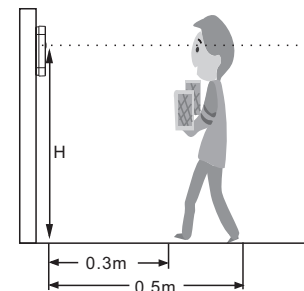
Installation



Mounting with Adapter Bracket



Height Requirement



The recommended installation height (H) is 1.45m. It can be adjusted according to the actual scene.

Height	Distance	Human Height Range
1.45m	0.3m	140cm~168cm
	0.5m	127cm~183cm
	1m	88cm~222cm

5 Network Connection & Login

● Wireless Network Connection

- ① Enable Wi-Fi network of your phone. Then scan the QR Code of the APP to download and install the APP in your phone.
- ② Run the APP and then login in your account of the APP (if you don't register, please register and log in first). Then enter the server list interface of the APP.
- ③ Power on your video doorbell. Then tap "Add Device" in the server list interface of the APP. Scan the QR code of the device and then follow directions to configure the Wi-Fi network. After that, the device will be automatically added to the server list of the APP. Then you can view the video and receive the relevant information of the device.

● Wired Network Connection

- ① Make sure that the device and the PC are connected via LAN.
- ② Find the IP-Tool from the CD and then install it in the computer. After that, run the IP-Tool.
- ③ Double-click the device information listed in the IP-Tool to connect the device. If there are many devices, please find your device via its MAC address.

Note: Please make sure the device and the computer are in the same local network. And the device is connected to the Ethernet.

- ④ Read the privacy statement and then activate the device. The default username is **admin**. You need to self-define the password. Then set the security questions and answers. It is important for you to remember these answers, or you will not be able to reset your password.
- ⑤ Follow directions to download and install the plugin if prompted. Available Web Browser: IE(plugin-in required)/Google Chrome/Firefox/Safari/Edge (It is recommended to use the latest version of the above browsers.)

After that, you can log in and configure the relevant parameters via web as needed.

- ⑥ Use your phone to scan the QR Code of the APP and then download and install the APP.
- ⑦ Run the APP and then login in your account of the APP (if you don't register, please register and log in first). Then enter the server list interface of the APP. Tap "Add Device" and scan the QR code of the device to directly add the device to the server list of the APP. Then you can view the video and receive the relevant information of the device.