



MER-28N160000A

Article number: 221348

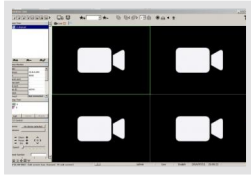
Multisignal HD Video Rekorder, 16-channel, up to 8MP, IP, HD- EX-SDI, AHD, CVI, HD-TVI, 960H

| | |
|---|--|
| 16-Channel Multisignal Recorder | Programmable composite Spot Monitor output |
| Resolution cameras up to 8 megapixel | H.265/H.264 video compression standard |
| Automatic signal and resolution detection | Image data export via USB 2.0, POS interface |
| IP, HD-SDI, EX-SDI, HD-TVI, AHD, CVI, 960H, Composite | Intuitive GUI, DSGVO compliant features |
| HDMI and VGA video outputs (Main/Spot operation) | Access via mobile, browser and CMS |
| Resolution Main Video out UHD 3840x2160 | eSATA connection, HDD Mirror function |

Specifications

| | | | |
|---------------------------|---|---------------------------------------|---|
| Video: | | Network: | |
| Signal format | Composite (FBAS), HD-TVI @ 8MP, AHD @ 8MP, CVI @ 8MP, EX-SDI @ 4MP, HD-SDI @ 4MP, IP @ 8MP | Data transfer incoming | 200 Mbps |
| Compression standard | H.264, H.265 | Data transfer outgoing | 200 Mbps |
| | | Transmission rate (Network) | 140 fps @ 1920 x 1080p |
| Display: | | Interfaces / Inputs / Outputs: | |
| Playback | full screen, 4 channel split, 6 channel split, 8 channel split, 9 channel split, 16 channel split | IP channels | 16 |
| Zoom function | in full screen mode (live and playback operation) | Channels total | 16 |
| Live Display | 3840x2160, 1920x1080, 1280x1024, 1280x720, max. 400fps | Video inputs (amount) | 16 |
| | | Main video outputs | HDMI (4K), VGA |
| | | Spot monitor | HDMI, VGA, composite (CVBS) |
| | | Interfaces external storage | USB, eSATA, Internal: 2x HDD up to 20 TB max., eSATA upto 12 bays, No capacity limit ; 10TB or more |
| | | Interfaces external storage | Internal: 2x HDD up to 20 TB max., eSATA upto 12 bays, No capacity limit ; 10TB or more |
| | | Alarm inputs | 16x TTL, programmable as NC/NO |
| | | Alarm outputs | 2x NO/NC contact, 2x TTL, open collector |
| | | Audio inputs | RCA, 4 |
| | | Audio output | RCA / HDMI |
| | | Serial interfaces | RS-485 |
| | | Serial interfaces protocols | Pelco D, Pelco P, Fastrax, UTC (HD signal format), UTC (SD signal format) |
| Recording: | | System requirements: | |
| Operation mode | Pentaplex | Operation system | Linux |
| Max. recording resolution | 3840x2160 | | |
| Recording speed | 100 fps @ 3840x2160, 200 fps @ 2560x1440, 400 fps @ 1920x1080, 400 fps @ 1280 x 720, 400 fps @ 960 x 540, 400 fps @ 704 x 576 | | |
| Max. recording rate | 400 fps. @1920x1080 | | |
| Recording | permanent, timer, movement, contact, PoS-Text, panic, event | | |
| Pre-alarm recording | up to 10sec.. | | |
| Post-alarm recording | up to 60sec. | | |
| Export of images or clip | USB-port external HDD | | |
| Features: | | General: | |
| Motion detector | Free selectable areas | Series | eneo MER-Series |
| Alarm notification | e-mail notification, alarm output, remote software, Live Popup, Spot Popup, Buzzer, PTZ Preset | Dimensions (HxWxD) | 50x380x340mm |
| Alarm triggers | contact, motion detection, video loss, disk error, PoS-Text | 19" Rack mountable | yes |
| Password protection | administrator & users | Number of HDD (internal) | max. 2 x SATA |
| Digital signature | watermark | Control units (external) | mouse, remote control |
| Menu languages | English, German, French, Spanish, Italian, Russian, Portugese, Polish, Turkish, Hungarian, norwegisch, Swedish, Finnish, Persian, Japanese, Korean, Chinese, Taiwanese, Thai, Slovenian | Colour | anthracite / black |
| Mobile access | iPhone, Android OS | Harddisk capacity (internal) | 0 TB |
| Remote access | Microsoft Internet Explorer, Mozilla Firefox (live image only), Safari (live image only), remote software | Max. harddisk capacity (internal) | 20 TB |
| Search function | date/time, event, calendar, text, Thumbnail, Panorama, Instant Playback, bookmark | Housing | Metal/Plastic |
| Event logs | yes | Weight | 2.0kg |
| Time synchronization | NTP | Power consumption | 60W |
| Covert camera mode | yes | RAID | RAID 1 |
| Patrol mode | yes | Supply voltage | 12VDC (PSU 100-240VAC, 50/60Hz included) |
| | | Temperature range (operation) | 0°C ~ +40°C |
| | | Text insertion interface | ATM/POS, 4 chann. max. |
| Network: | | Scope of delivery: | |
| Network | 10/100/1000 Base-Tx, RJ45 | Parts supplied | manual, IR remote controller, PSU, power cord, HDD assembly-kit, remote viewer software, mouse, 19" rack mount angle optional |
| Network protocols | TCP/IP, HTTP, DHCP, NTP, UPnP | | |
| Data transfer rate | 400 Mbps | | |

Related Products



MER_HDR_CMS|SKU: 207186



HDD-3000SATA Purple|SKU: 217657



HDD-4000SATA Purple|SKU: 217659



HDD-6000SATA Purple|SKU: 217660



HDD-8000SATA Purple|SKU: 218583

More product information

Intelligent control of the recording rate based on incoming camera resolution
Channels can be assigned with IP or different HD / SD signal formats (mixed operation possible)

Product recommendations



CON-HDD eneo|SKU: 216959



HDD-2000SATA Purple|SKU: 217658



KBD-2USB|SKU: 217652



eneo is a registered trademark of
VIDEOR E. Hartig GmbH
Carl-Zeiss-Straße 8
63322 Rödermark, Deutschland

Phone: +49 6074 - 888 - 300
Fax: +49 6074 - 888 - 100
E-Mail: info@eneo-security.com
Web: www.eneo-security.com

Stay informed and subscribe
to the eneo newsletter

