



IER-28R040005A

Article number: 220198

Network Video Recorder, 4x IP, H.265, 32Mbps, HDMI/VGA 4x PoE, w/o HDD

4-channel network video recorder	CMS administration software included
Easy installation with eneo IP cameras	Smartphone app for video monitoring / configuration
Compression method: H.265	4x alarm input and 1x alarm output
Resolution IP cameras up to 8 megapixel	4x PoE port (IEEE802.3af), total power 38W
Remote Access: Monitor and remote control of additional recorders	4K 3840x2160 HDMI / VGA monitor output
Memory expandable via iSCSI	Multilingual Graphic User Interface (GUI)

Specifications

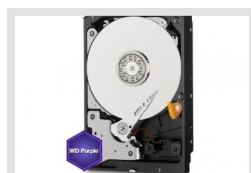
Video:	
Compression standard	H.264, H.265
Display:	
Playback	full screen, 4 channel split, split sequence
Live Display	3840x2160, 1920x1080, 1280x720, 1024x768, max. 120fps
Recording:	
Max. recording resolution	3840x2160
Recording speed	25 / 30 fps per channel
Max. recording rate	120 fps
Recording	permanent, timer, movement, contact, panic, PoS-Text, event
Pre-alarm recording	up to 5sec.
Backup	Setup
Export of images or clip	USB-port external HDD, via client software, AVI, H4V, MP4 via eneo Center
Features:	
Motion detector	integrated
Analysis functions	activity detection
Alarm notification	e-mail notification, alarm output, remote software, Live Popup, Buzzer, PTZ Preset, FTP, Push (Mobile)
Alarm triggers	disk error, eystem error, video loss, motion detection, PoS-Text, contact
Audio support	yes
Password protection	user control
HDD hotswap	no
Menu languages	English, German, French, Italian, Dutch, Chinese
Remote access	remote software, iPhone, Android, WEB Browser (Java)
Search function	date/time, event, Thumbnail, text, museum, Instant Playback, VCA search
Covert camera mode	yes
Network:	
Network	1x 10/100/1000 Base-T RJ45
Network connection	WAN 1 x 10/100/1000BASE-T, 4x PoE RJ45 10/100 Base-T
Network protocols	TCP/IP, DHCP, Zeroconf, IPv4, IPv6, HTTP, UPnP, ARP, SMTP, RTSP, RTP, FTP, NTP
Data transfer rate	104 Mbps
Data transfer incoming	32 Mbps
Data transfer outgoing	72 Mbps

Interfaces / Inputs / Outputs:	
IP channels	4
Monitor outputs	HDMI (4K), VGA
Spot monitor	no
USB ports	2x USB 2.0, 1x USB 3.0
Interfaces external storage	iSCSI, A maximum of 96TB can be managed as internal and external memory size, Internal: 1x HDD up to 10 TB max., 6x iSCSI (16TB lun) up to 96TB max. depending on internal HDD size
Interfaces external storage	A maximum of 96TB can be managed as internal and external memory size, Internal: 1x HDD up to 10 TB max., 6x iSCSI (16TB lun) up to 96TB max. depending on internal HDD size
Alarm inputs	4
Alarm output	1
Audio output	line output, HDMI
Serial interfaces	RS-485
System requirements:	
Operation system	Linux
General:	
Dimensions (HxWxD)	44,9x375x318,2mm
19" Rack mountable	no
Number of HDD slots	2x SATA
Control units (external)	mouse, system keyboard, remote control
Harddisk capacity (internal)	0 TB
Max. harddisk capacity (internal)	20 TB
Weight	2.3kg
Integrated writer	no
Power consumption	56W
ONVIF	yes
PoE Power	42 W
Power over Ethernet	IEEE 802.3af, IEEE 802.3at
RAID	n/a
Supply voltage	48VDC (PSU 100~240VAC, 50/60Hz included)
Temperature range (operation)	0°C ~ +45°C
Scope of delivery:	
Parts supplied	remote viewer software, PSU, manual, IR remote controller, HDD assembly-kit, mouse
Notes:	
Firmware update	via remote software, USB

Related Products



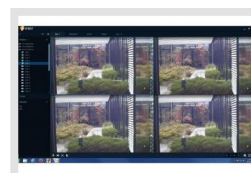
HDD-4000SATA Purple | SKU: 217659



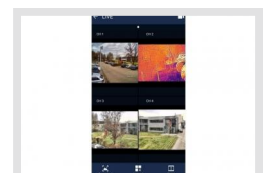
HDD-6000SATA Purple | SKU: 217660



HDD-8000SATA Purple | SKU: 218583



eneo Center | SKU: 217368



eneo Center mobile | SKU: 217850

More product information

ADUP (Archive Dual User Permission): dual authentication to access search, playback and backup. Users of this feature should have administrator rights.

Product recommendations



CON-HDD eneo | SKU: 216959



HDD-3000SATA Purple | SKU: 217657



HDD-2000SATA Purple | SKU: 217658



IEM-38R640005A | SKU: 217651



KBD-2USB | SKU: 217652

