

BC1103

3 MP Intelligent IP box camera

Quick Start Guide



Find additional manuals, the datasheet, the EU Declaration of Conformity and the latest firmware for this product at:
<http://www.tkhsecurity.com/support-files>

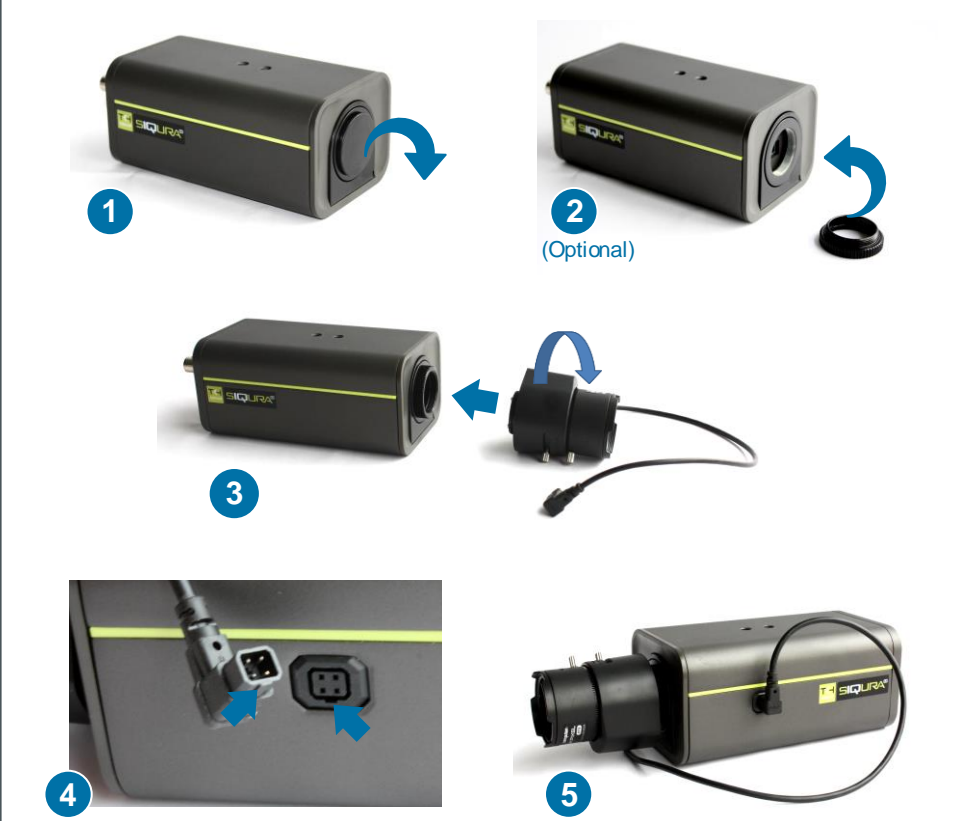


Unpack



Note: Subject to modification. Actual product and accessories may differ in appearance.

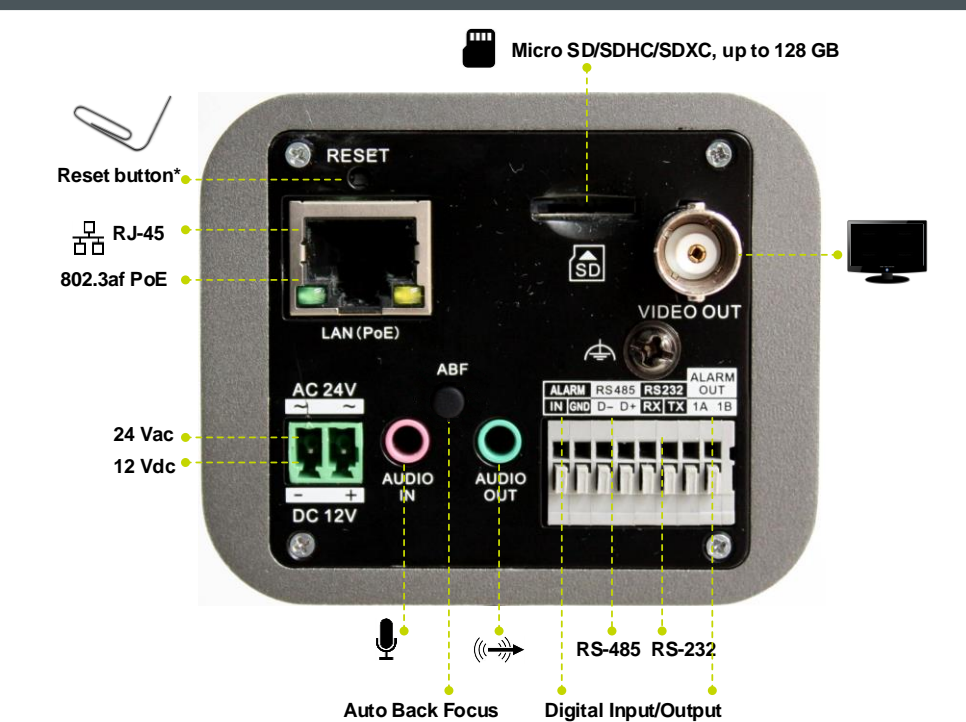
Mount lens



Mount camera



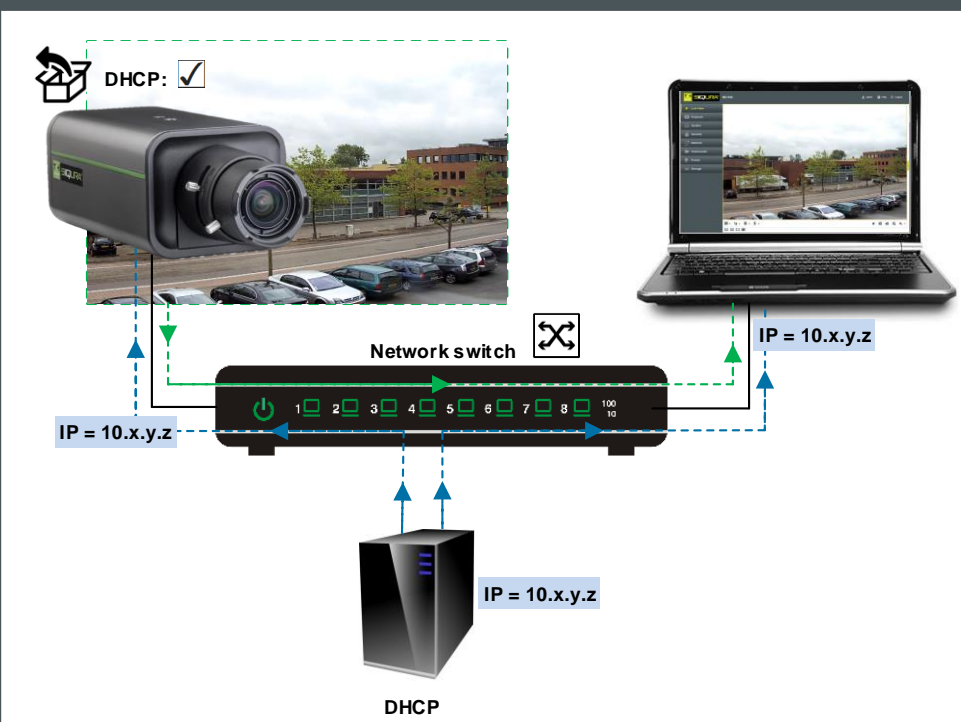
Connect



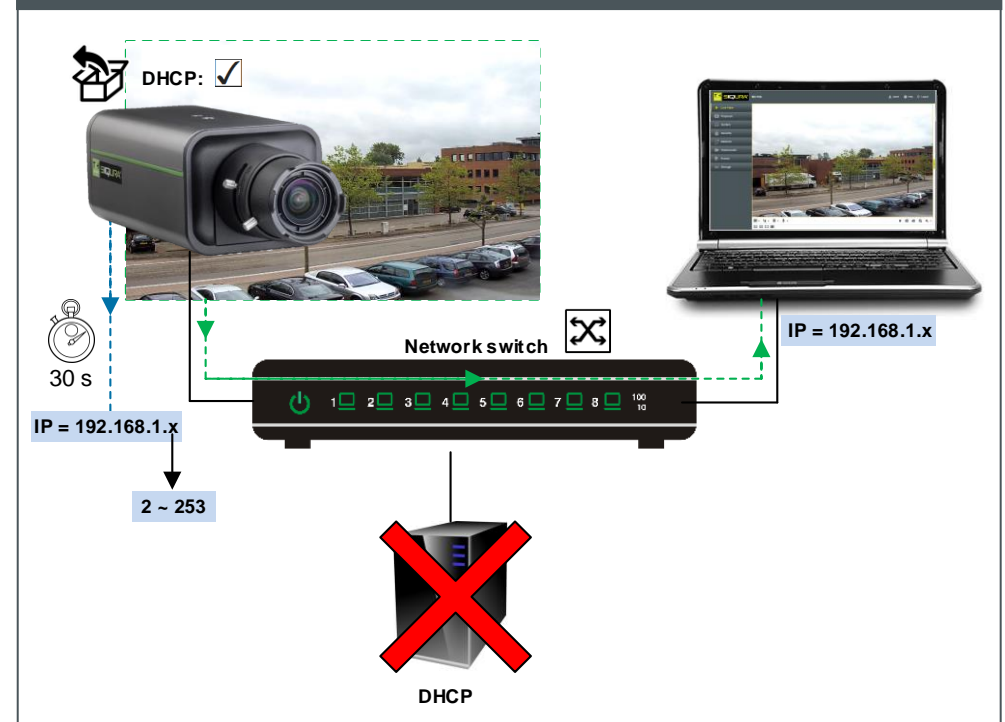
***Reset button:** Press and hold for 10 sec. when powering on or rebooting.

Warning: Restores factory default settings, including IP address, user name and password!

Use DHCP server



Use fixed IP address



Note: Use Device Manager (see next) to discover the camera on the network.

Install Device Manager (optional)

Important: 1103 series cameras require Device Manager version 1.8.1 or later. Replace an existing, older installation of this tool on your PC, if necessary.

Change IP address via Device Manager

Open web interface via Device Manager

Set password

Administrator / End User

Set a strong password!

qwerty1234 ❌

x6W@oM0a!9#F ✅

Note: For information about user accounts and passwords, see User Manual.

View live video

Initialise lens / Adjust focus

Note:

- **Auxiliary focus** = Auto back focus (push to focus)
- **Focus +/-** = Manual back focus.