

...vision...far beyond imagination.

## H63ZME-F-HD-PR01 63X ZOOM LENS

- Up to 2,500 mm Focal Range
- Up to Full HD Resolution (1080p)
- PAIR-Technology
- Day / Night
- 2 Megapixels
- High Speed Motors
- 1/2", C-Mount
- Iris Override
- Compact and Robust
- Optimised for use in Port Facilities, Border Patrol, Coast Oil Fields, Highway Monitoring etc.



**PAIR**  
Pentax Atmospheric Interference Reduction

# HD RESOLUTION

## 63X (126X with 2X extender) ZOOM

The lenses zoom range is 20 to 1,250 mm, and when the internal 2X extender is switched in, the focal length increases to 40 to 2,500 mm. With 2,500 mm focal length at 1,000 m distance, the field of view is 2.5 m by 1.9 m. The extremely high magnification in combination with HD resolution means a person can mostly be identified at distances in excess of 1 km. Therefore, this lens is ideal for video surveillance in city centers, air ports, harbours, as well as at the border, intersections, city streets and highways.

### TECHNICAL SPECIFICATIONS

Model	Format size	Mount	Focal length in mm	Iris range	Iris control	M. O. D.	Horizontal angle of view	Filter size in mm	Zoom Speed	Focus Speed
H63ZME-F-HD-PR01	1/2"	C	20 - 1,250	4 - 360	VS/DC	9 m	18.5° - 0.3°	122	5.9 sec	4 sec
with 2x extender*			40 - 2,500	8 - 720			9.2° - 0.1°			

\* The extender needs 2 seconds to be activated/deactivated

### PAIR-TECHNOLOGY FOR BETTER IMAGE QUALITY AVAILABLE FOR H63ZME-F-HD-PR01

**PAIR-Technology** reduces the affect of particles in the air, such as fog, rain, sand, smoke and snow.

The **integrated electronic image stabilizer** is particularly useful at telephoto, when even small movements of the lens or pan/tilt head or the effects of wind buffeted the mast will cause blur. The image stabilizer corrects the blur in „real time“ allowing monitoring even when other systems cannot provide useful images any more.

The **provided software** allows remote control of lens functions, including zoom, focus, iris and operation of the **internal 2X Extender**. In addition, the software includes **reliable autofocus** with the click of a mouse – a useful advantage in super-telephoto position, when depth of field is extremely low.

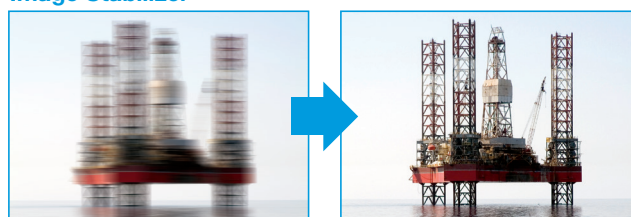
The lens is equipped with standard **RS232, RS422 & RS485 interfaces**. It comes with open platform control software and is compatible with HD-SDI and VGA CCTV cameras.

**All functions are incorporated** into the lens making installation and system integration as simply and cost effective as possible.

The **HD optics** in the lens offer significantly higher resolution over standard VGA lenses. HD offers 4X higher resolution.

**Day/Night** correction creates no visible focus shift across all focal lengths from visible to near IR light.

#### Image Stabilizer



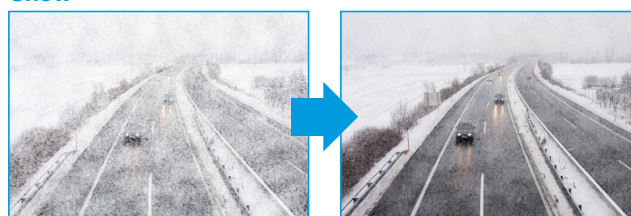
#### Fog



#### Sand



#### Snow



**RICOH**  
imagine. change

**RICOH IMAGING  
DEUTSCHLAND GmbH**

**Industrial Optical  
Systems Division**

Am Kaiserkai 1  
20457 Hamburg, Germany  
Office: +49 (0)40 532 01 33 66  
Sales: +49 (0)40 532 01 33 66  
Fax: +49 (0)40 532 01 33 39  
Email: iosd@eu.ricoh-imaging.com

**RICOH IMAGING  
UK Ltd.**

**Industrial Optical  
Systems Division**

Heron Drive, Langley  
Slough SL3 8PN, United Kingdom  
Office: + 44 (0) 1753 211071  
Sales: + 44 (0) 7973 154430  
Fax: + 44 (0) 1753 211090  
Email: iosd@eu.ricoh-imaging.com

**RICOH IMAGING  
EUROPE S.A.S.**

**Industrial Optical  
Systems Division**

112 Quai de Bezons, B.P. 204  
95106 Argenteuil Cedex, France  
Office: +49 (0) 40 532 01 33 66  
Sales: +33 (0) 680 61 43 48  
Fax: +49 (0) 40 532 01 33 39  
Email: iosd@eu.ricoh-imaging.com